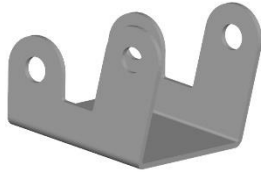


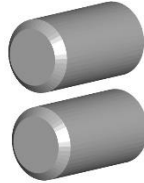
30002 - Roller Assembly Instruction

For customers installing the SRV/ValueLine TV Lift in cabinets with hinged lids, an add-on roller assembly is available for purchase from Touchstone Home Products. The roller assembly can be ordered by calling our customer service department at 800-215-1990 or through our website at www.touchstonehomeproducts.com

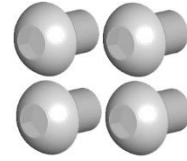
Parts Required:



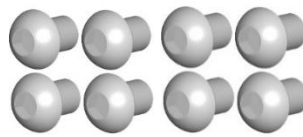
Roller Bracket



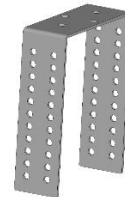
Rollers



Roller Bolts



M6x16 Bolts (8 pieces)



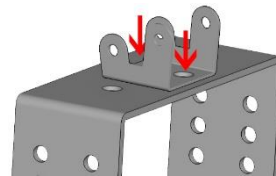
C Bracket

Tools Required:

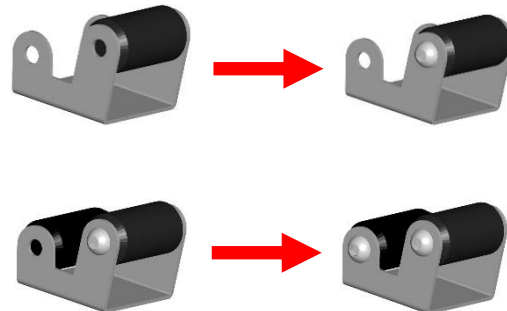
- Hex wrench

Roller Assembly and Mounting Instructions:

1. Align the roller bracket with the 2 holes in the C bracket and attach the roller bracket to the C bracket using the bolts provided.



2. Once the roller bracket is attached to the C bracket, install both rollers on the roller bracket using the bolts provided.



*****If you have any questions regarding installation, please contact our support department at 800-215-1990 option 3***