



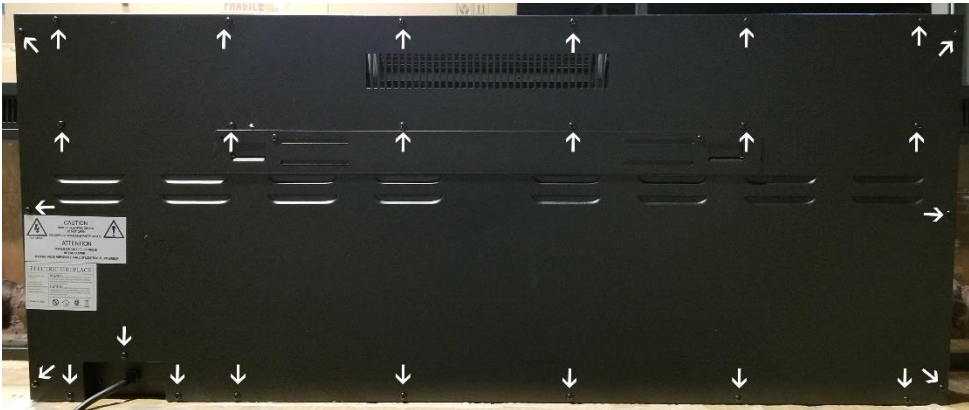
Replacing LED Light Strips – AudioFlare Fireplace

Tools Required:

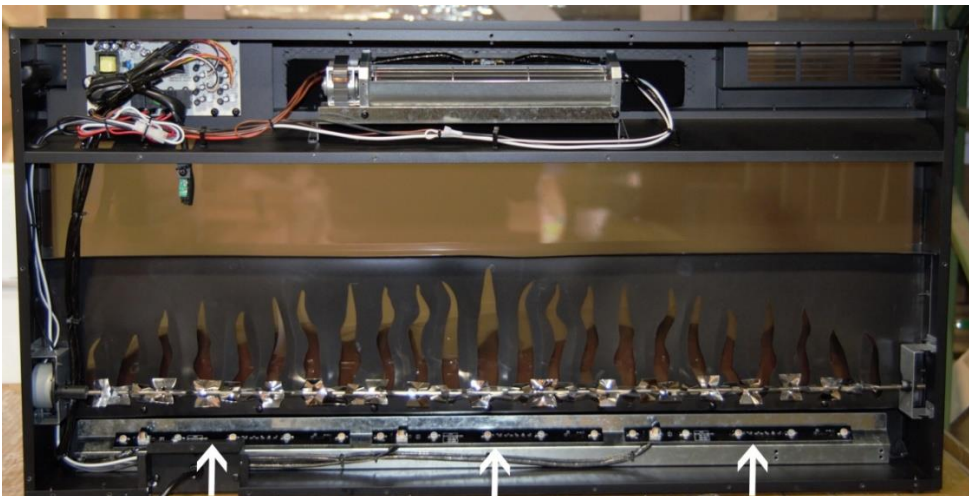
- Philips-head screw driver
- Needle-nose pliers

Instructions:

1. Unplug fireplace and remove from wall.
- 2 Remove the back panel of the fireplace by removing the screws shown below:



3. After the rear panel is removed, you will have access to the light strips. The arrows point to the light strips installed.





**PREMIUM
ELECTRIC FIREPLACES
& TV LIFTS**

Exceeding Expectations

4. Unplug the power connection from the failing light strip.



6. Once the light strip is unplugged, locate the 2 standoffs holding each light strip to the fireplace frame.





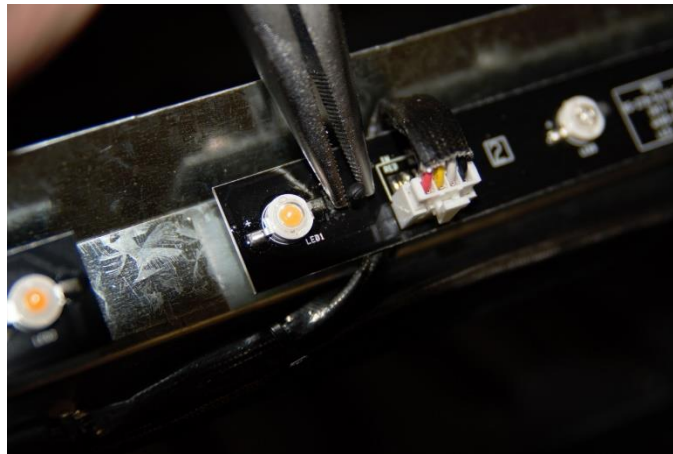
**PREMIUM
ELECTRIC FIREPLACES
& TV LIFTS**

Exceeding Expectations

7. Using a pair of needle-nose pliers, pinch each standoff and lift the light strip UP to unhook the light strip from the standoffs.



Light strip standoff



Pinch with needle-nose pliers and lift light strip UP to remove.

8. Once the defective light strip is removed, install the new strip and test before closing the fireplace back up.

****If you have any questions, contact the technical support department at Touchstone Home Products at 800-215-1990 option 3.**