

## Disconnecting Heating Element – Sideline Elite Fireplace

### *Tools Needed:*

- Phillips Screwdriver

### *Instructions*

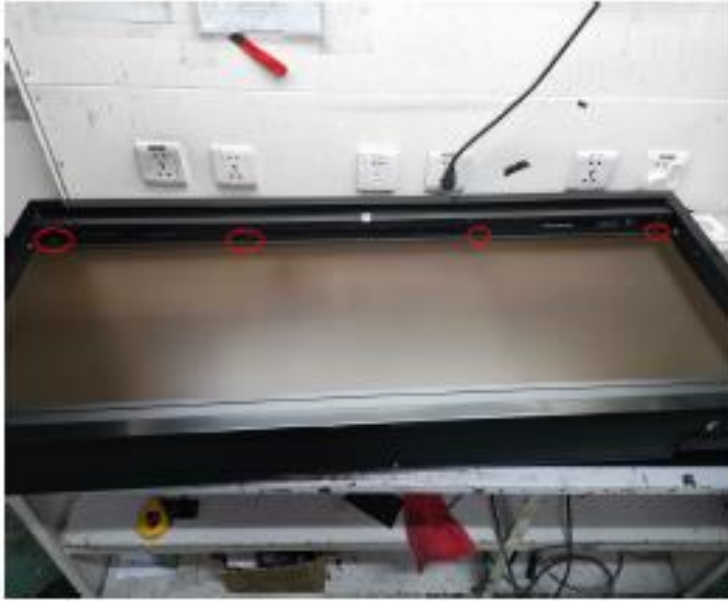
1. Turn Off Sideline Elite Fireplace.
2. Remove the glass panel from the fireplace by removing the 2 screws holding the panel in place.



3. Once the glass panel is removed, remove the firelog/glass crystals and 2 side pieces inside the fireplace opening.



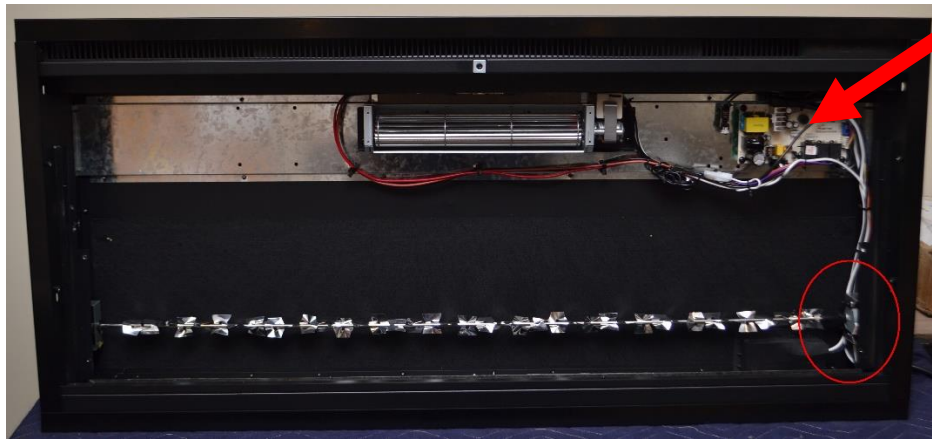
4. Remove the 4 screws holding the bar at the top of the flame display board.



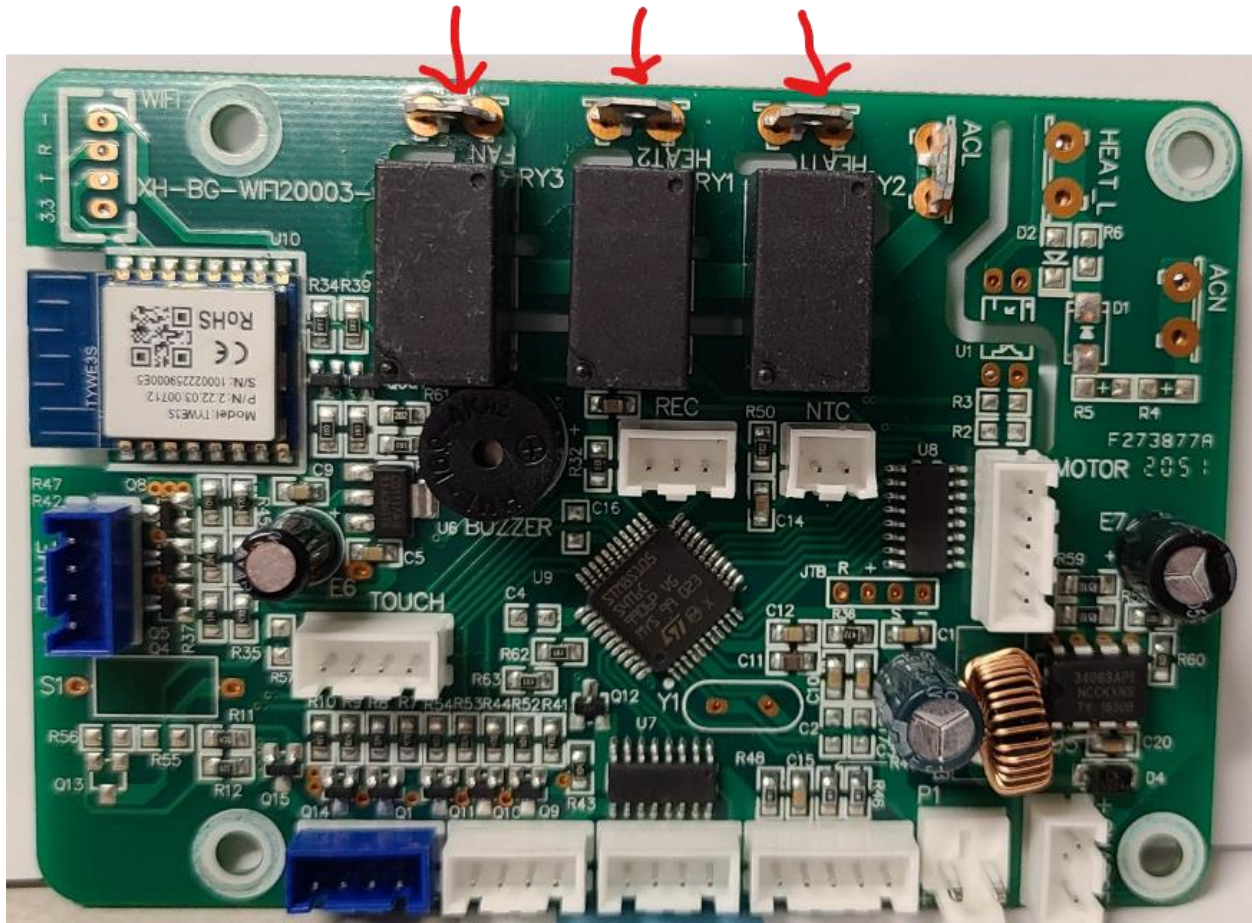
5. Once the bar is removed, remove the flame display board.



6. Locate the control board in the upper right corner of the fireplace.



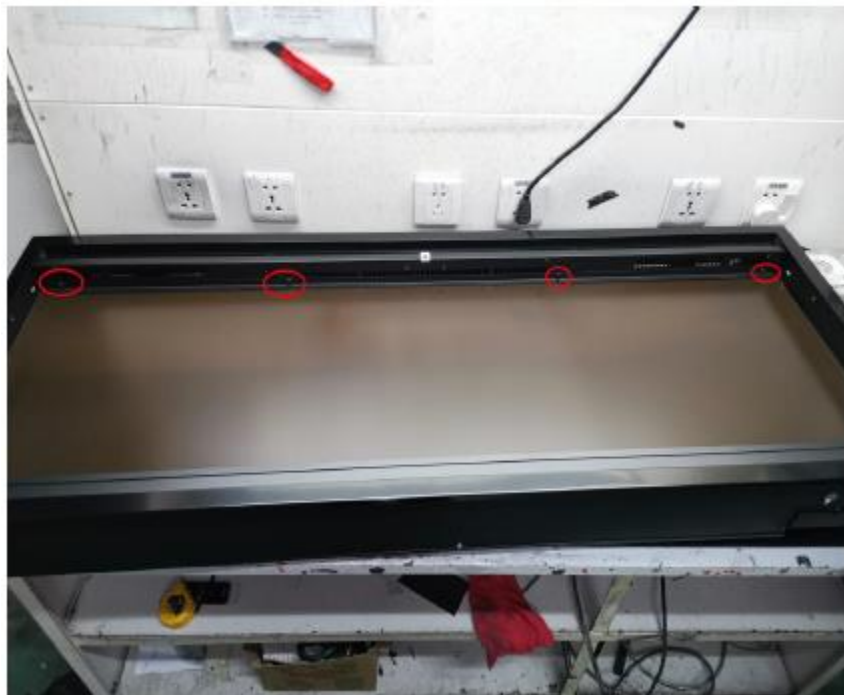
7. Disconnect the HEAT1, HEAT2, and FAN cables from the control board



8. Reinstall the flame display board and the bar holding the bar in place.



9. Reinstall the bar at the top of the flame display panel.



10. Reinstall the 2 side panels.



11. Once the side panels are reinstalled, reinstall the log/crystals and front glass panel.



**\*\*If you have any questions, contact the technical support department at Touchstone Home Products at 800-215-1990.**