

Reinstalling Flame Rod in Sideline Elite Fireplace

Tools Needed:

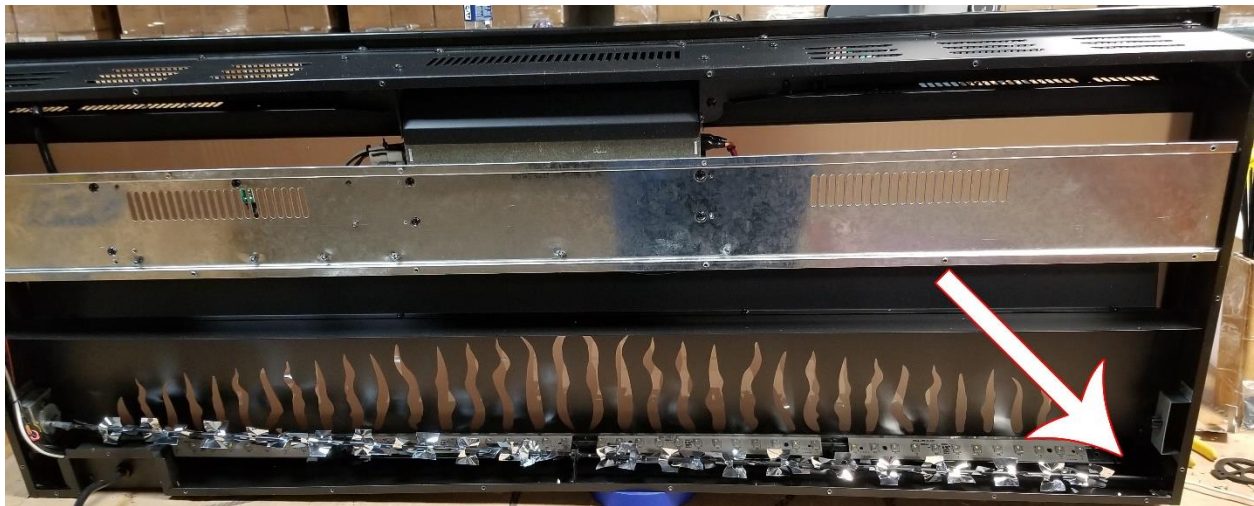
- Phillips Screwdriver

Instructions

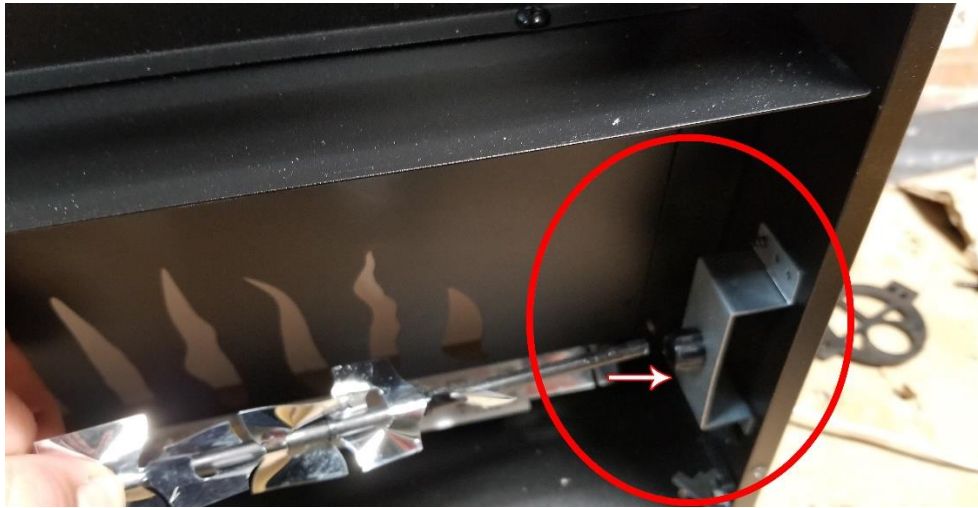
1. Turn Off Sideline Elite Fireplace.
2. Remove the glass panel from fireplace and remove the fireplace from the wall. Check the user manual for instructions on removing the front glass panel and removing the unit from the wall.
3. Once removed from the wall, remove the screws shown below from the back of the fireplace.



4. Once the back panel is removed, you will have access to the flame rod. If the flame rod is out of it's socket, it will look like the picture below.

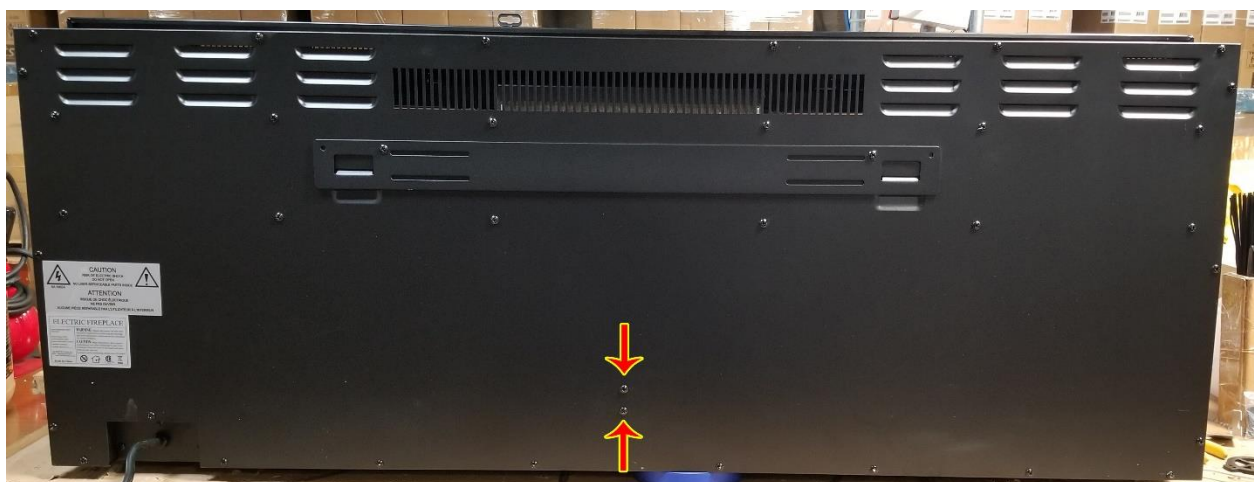
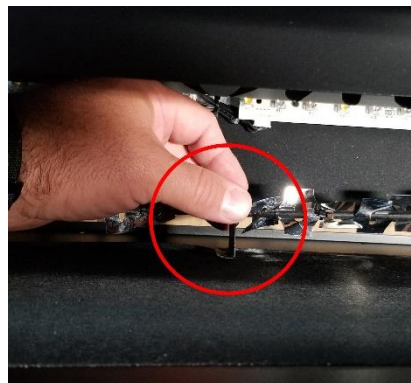
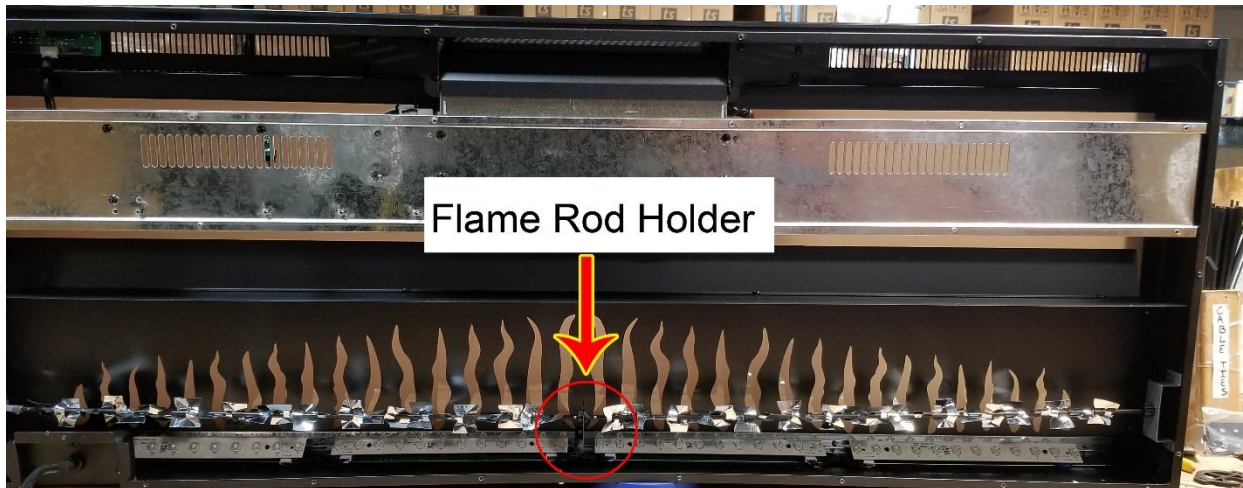


5. Re-insert the flame rod back into the socket.



6. Once the flame rod is inserted back into the socket, test the fireplace. You should no longer hear the rattling noise.

7. Reinstall the back panel. Install the 2 screws for the flame rod holder first (shown below). Line up the 2 holes in the flame rod holder with the 2 matching holes in the back panel. Reinstall the screws to hold the flame rod holder in place.



8. Once the flame rod holder is attached, reinstall the remaining screws for the back panel.



9. Once all screws are reinstalled, test the fireplace before reinstalling the fireplace in the wall.

10. Once completed and satisfied, reinstall the fireplace in the wall and reinstall the front glass panel.

****If you have any questions, contact the technical support department at Touchstone Home Products at 800-215-1990 option 3.**