

Reinstalling Flame Rod in Sideline Elite Fireplace

Tools Needed:

- Phillips Screwdriver

Instructions

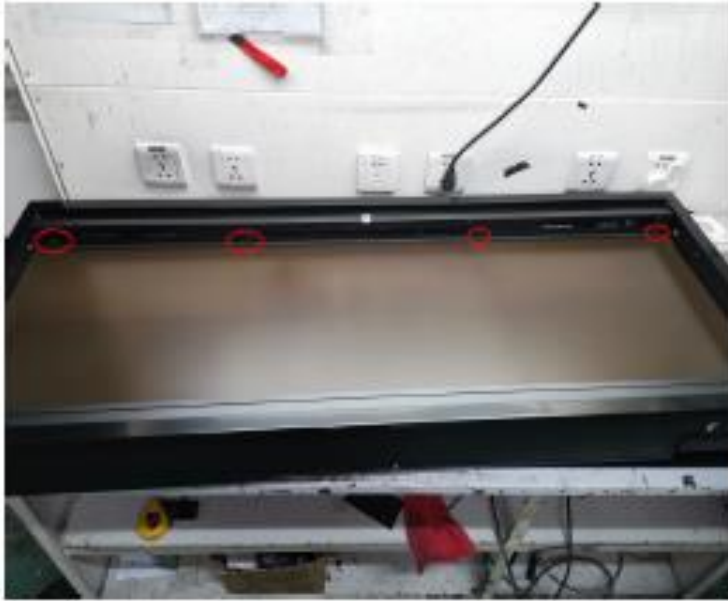
1. Turn Off Sideline Elite Fireplace.
2. Remove the glass panel from the fireplace by removing the 2 screws holding the panel in place.



3. Once the glass panel is removed, remove the firelog/glass crystals and 2 side pieces inside the fireplace opening.



4. Remove the 4 screws holding the bar at the top of the flame display board.



5. Once the bar is removed, remove the flame display board.

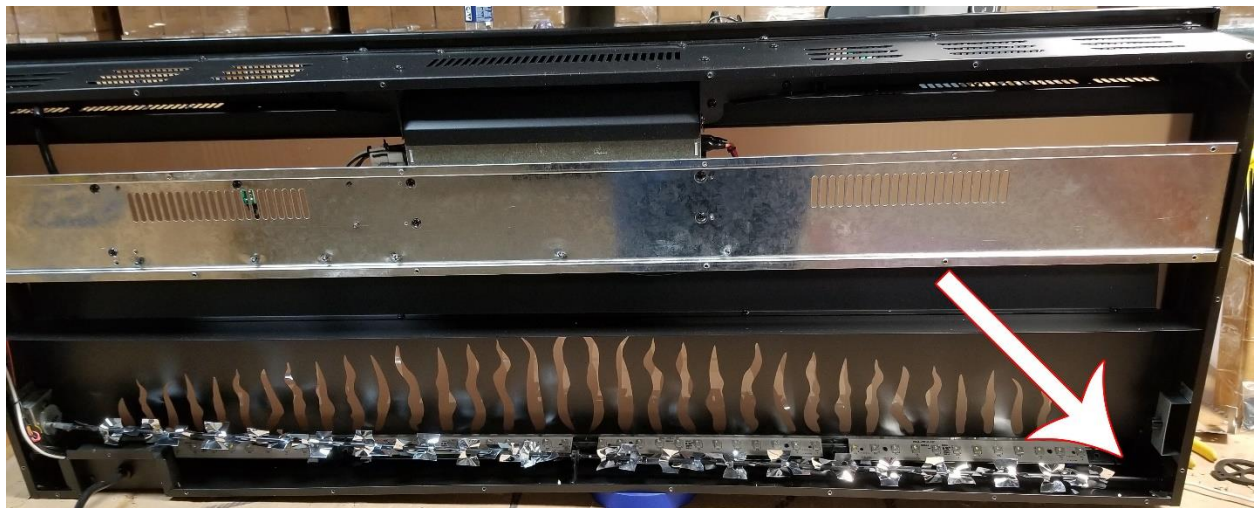


6. After removing the flame display board, remove the 4 screws holding the flame panel in place.

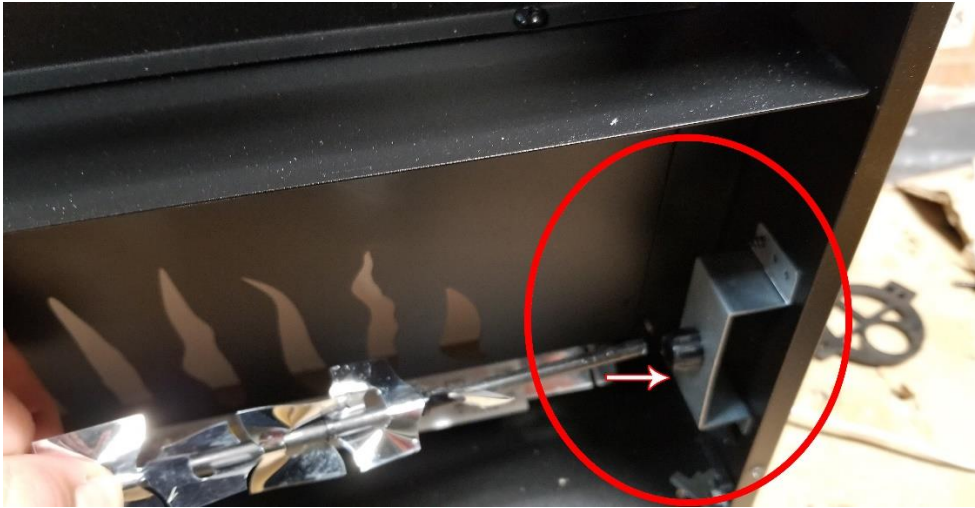


7. After removing the flame panel, locate the end of the flame rod that is out of its socket.

**Please note, as you are opening the unit from the front, the flame rod socket will be on the left side when looking at the unit. The pictures below show the back panel of the fireplace removed.

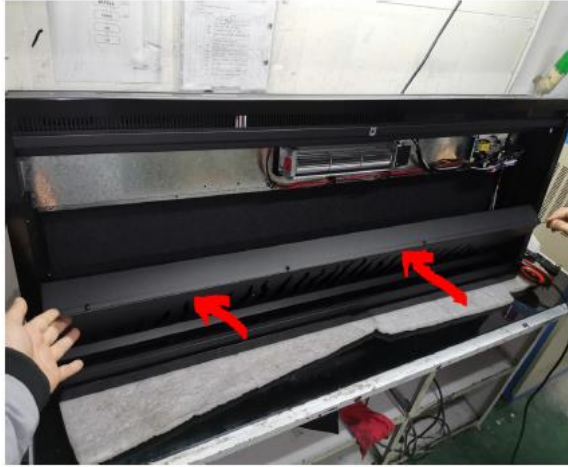


8. Re-insert the flame rod back into the socket.



9. Once reinstalled, test the fireplace to be sure that there is no noise.

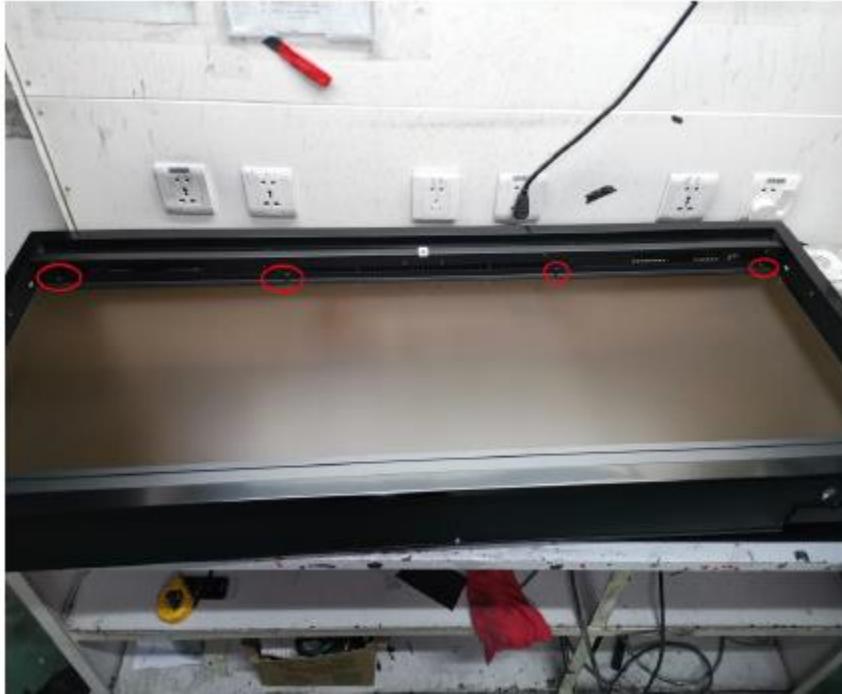
10. Once satisfied, reinstall the flame panel and refasten the 4 screws holding the panel in place.



11. Once the flame panel is installed, reinstall the flame display board and the bar holding the bar in place.



12. Reinstall the bar at the top of the flame display panel.



13. Reinstall the 2 side panels.



14. Once the side panels are reinstalled, reinstall the log/crystals and front glass panel.



****If you have any questions, contact the technical support department at Touchstone Home Products at 800-215-1990.**