

## Removing Flame Rod Bracket in Sideline Elite Fireplace

### *Tools Needed:*

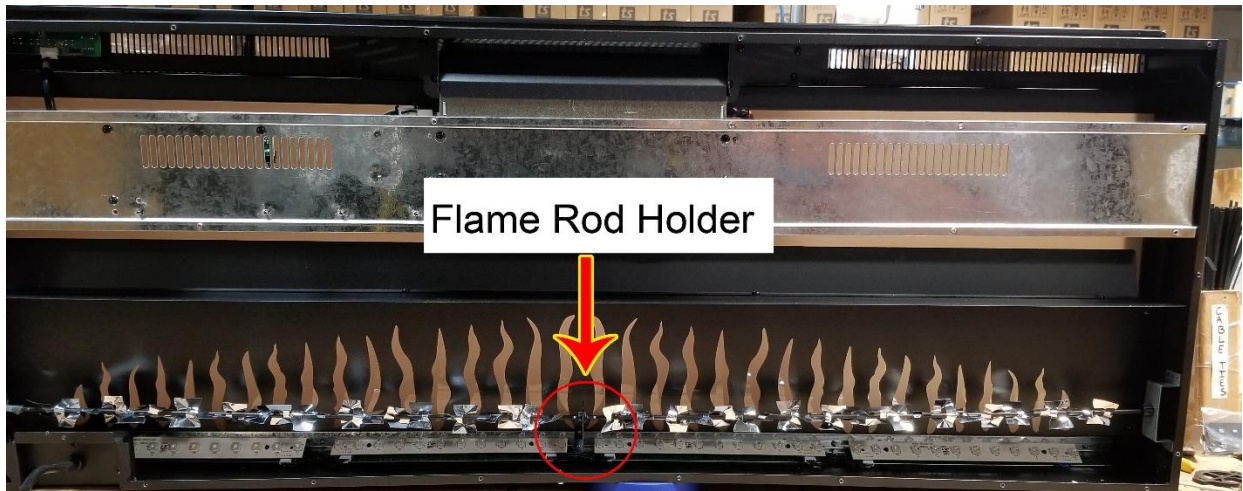
- Phillips Screwdriver

### *Instructions*

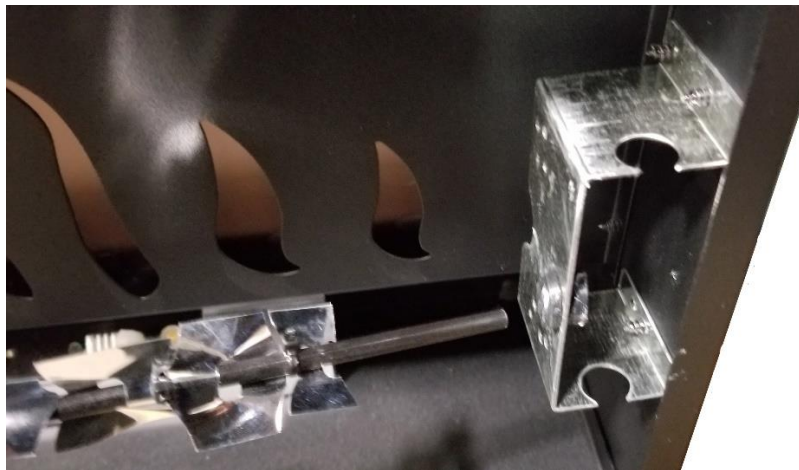
1. Turn Off Sideline Elite Fireplace.
2. Remove the glass panel from fireplace and remove the fireplace from the wall. Check the user manual for instructions on removing the front glass panel and removing the unit from the wall.
3. Once removed from the wall, remove the screws shown below from the back of the fireplace.



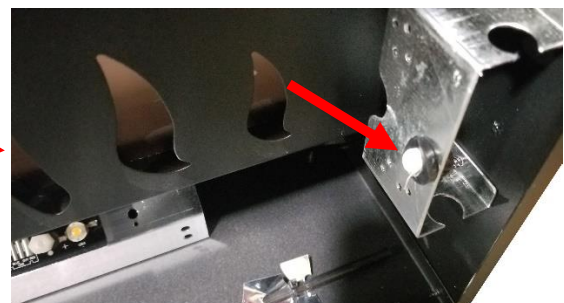
4. Once the back panel is removed, disconnect the flame rod bracket from the flame rod, leaving the rubber grommet in place on the flame rod. The bracket is shown below:



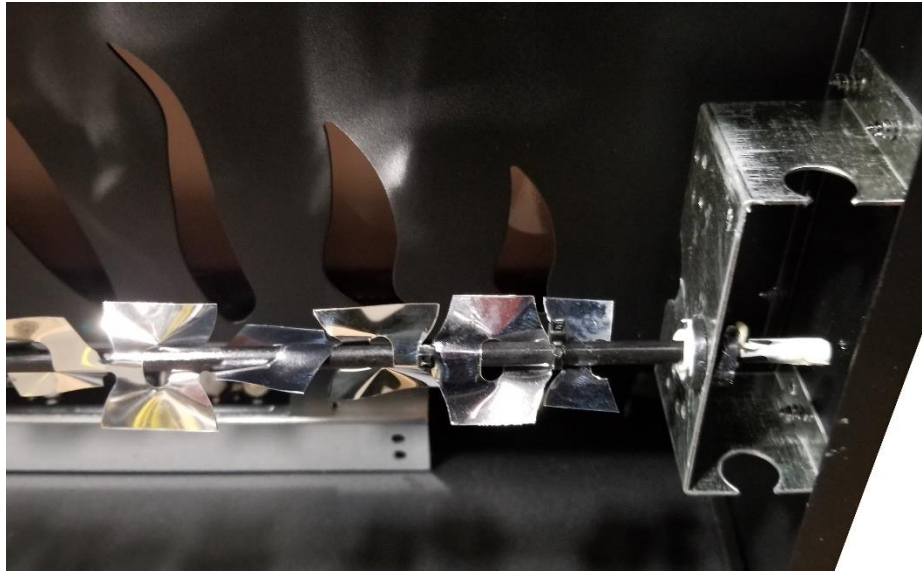
5. To relubricate, pull the flame rod out of the grommet.



6. Once the flame rod is removed from the grommet, place lubrication in the hole in the grommet.



7. Once the grommet is lubricated, reinstall the flame rod in the grommet.



8. Once completed, reinstall the backpanel on the fireplace by securing the back panel screws shown below.



9. Once all screws are reinstalled, test the fireplace before reinstalling the fireplace in the wall.

10. Once completed and satisfied, reinstall the fireplace in the wall and reinstall the front glass panel.

**\*\*If you have any questions, contact the technical support department at Touchstone Home Products at 800-215-1990 option 3.**