

Replacing the Flame Motor in the Sideline Elite Fireplace

Tools Needed:

- Phillips Screwdriver, Scissors/boxcutter

Instructions

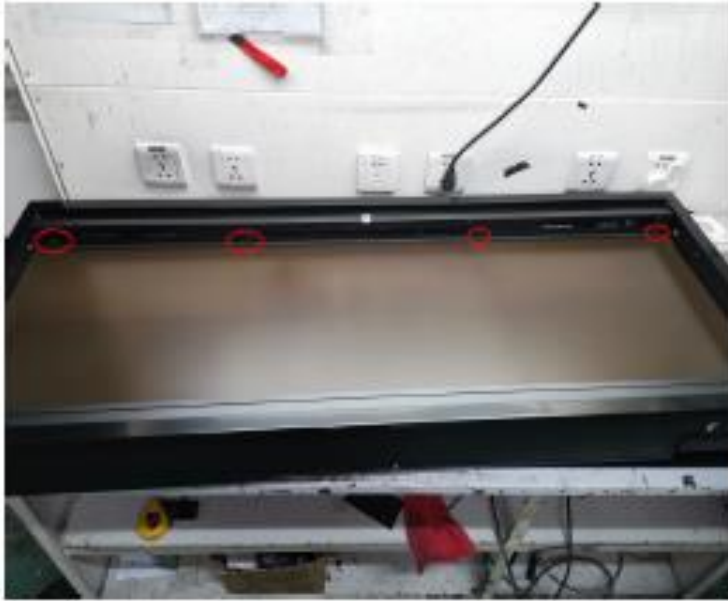
1. Turn Off Sideline Elite Fireplace.
2. Remove the glass panel from the fireplace by removing the 2 screws holding the panel in place.



3. Once the glass panel is removed, remove the fire log/glass crystals and 2 side pieces inside the fireplace opening.



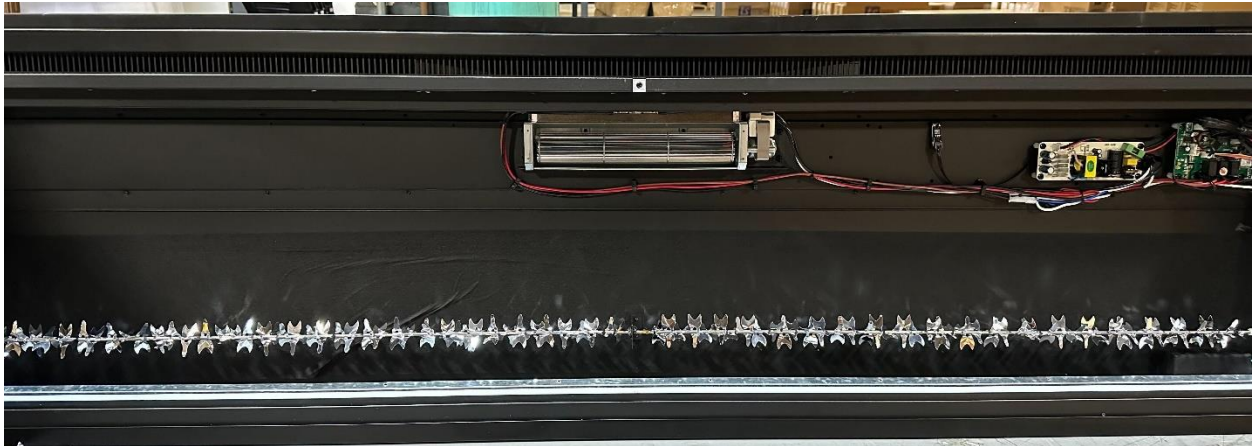
4. Remove the 4 screws holding the bar at the top of the flame display board.



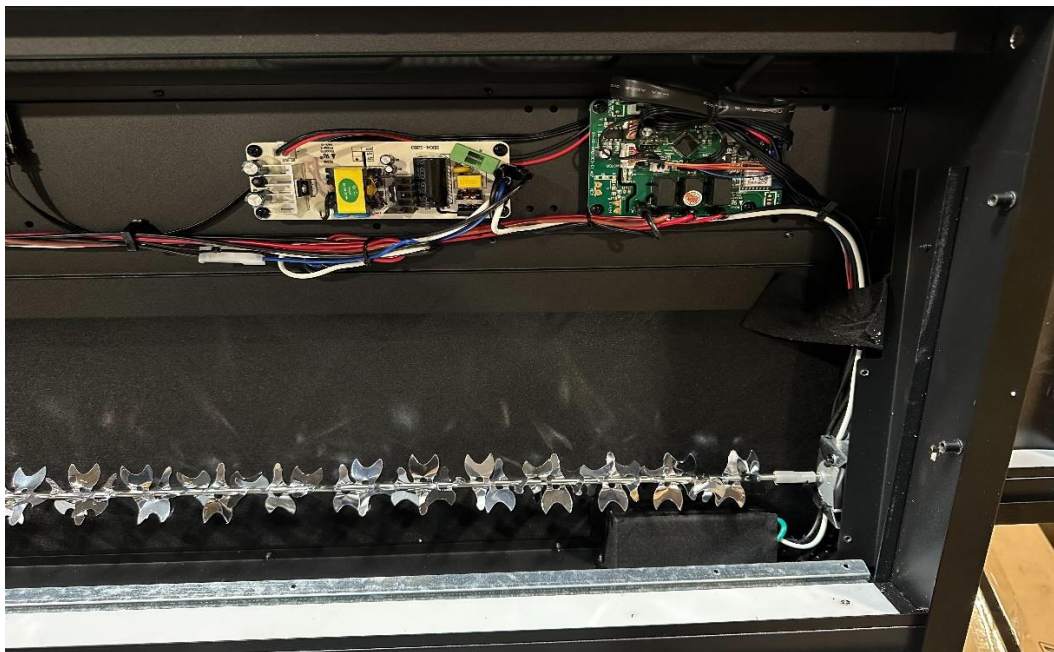
5. Once the bar is removed, remove the flame display board.



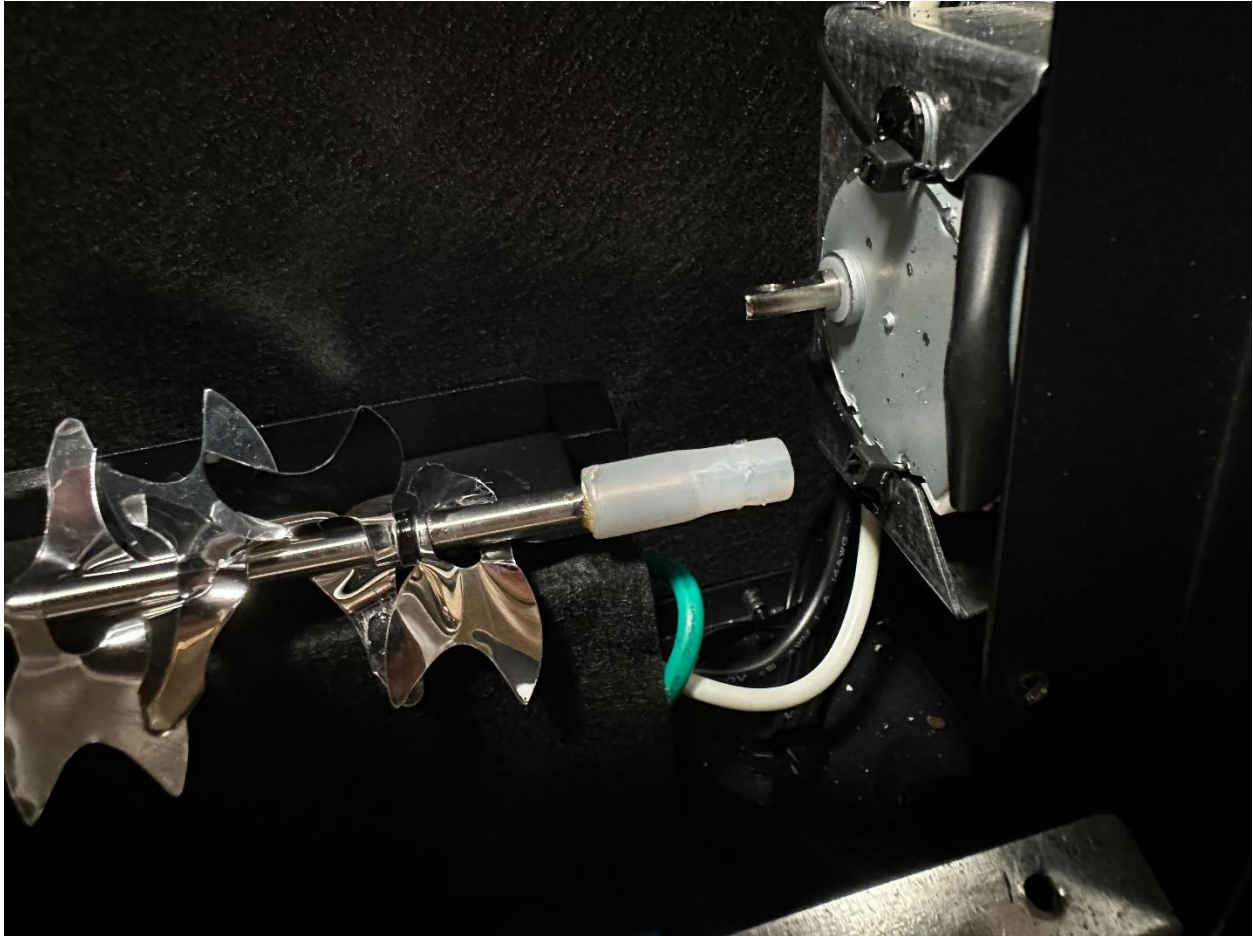
6. After removing the flame display board, remove the 4 screws holding the flame panel in place.



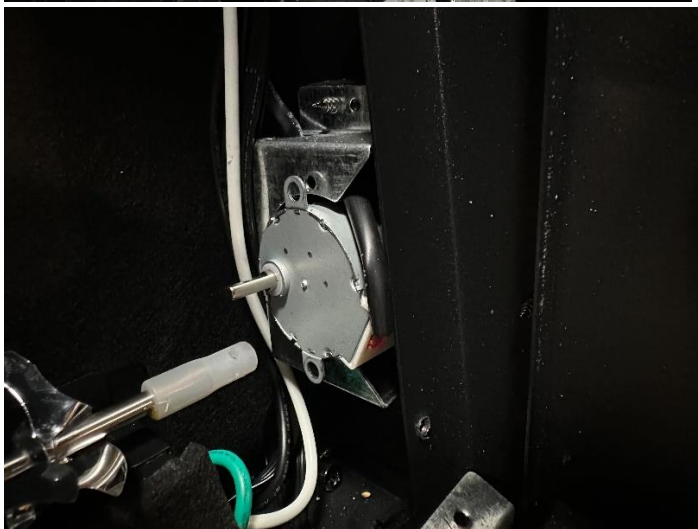
7. After removing the flame panel, locate the flame rod motor. The flame rod should be attached to the motor.



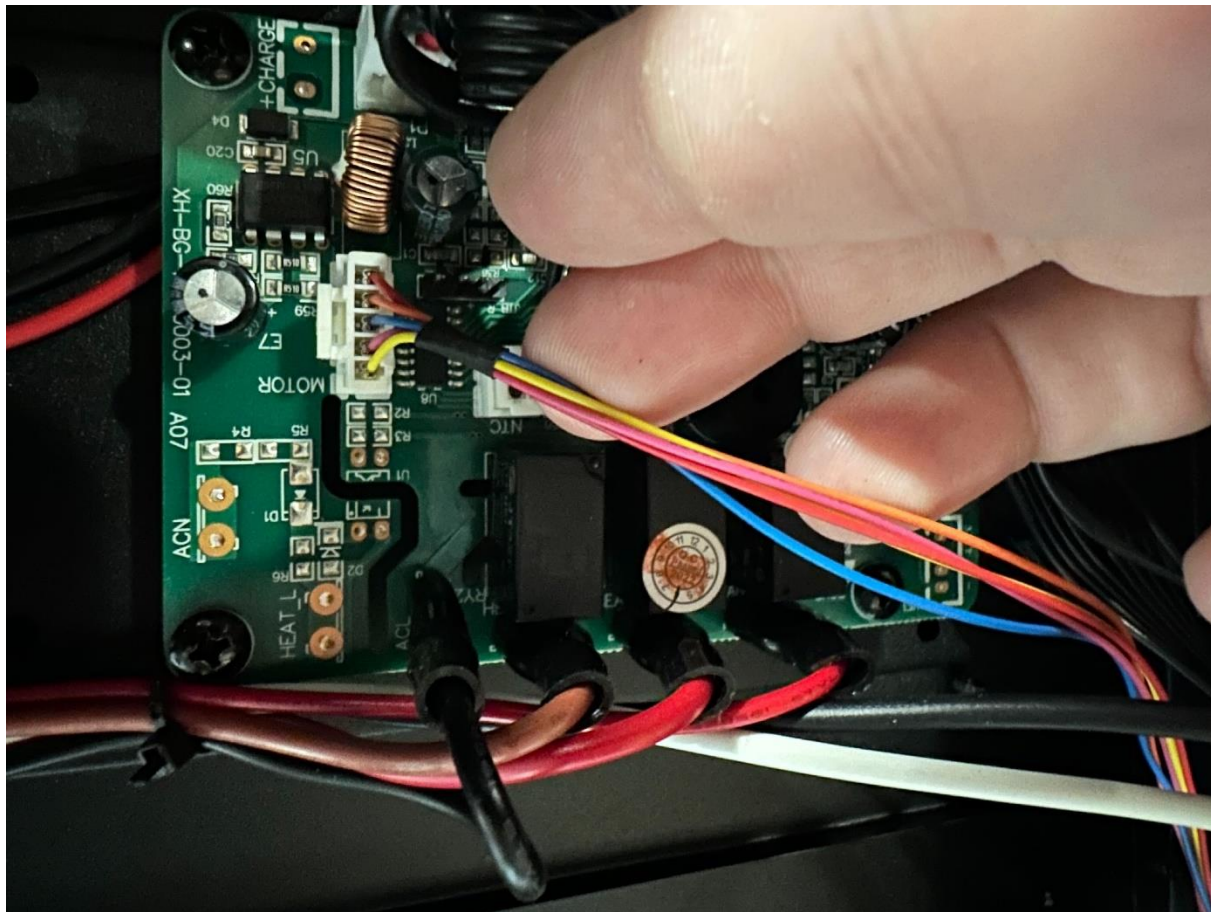
8. Separate the Flame rod from the motor. (They are held together by a zip tie that needs to be removed.)



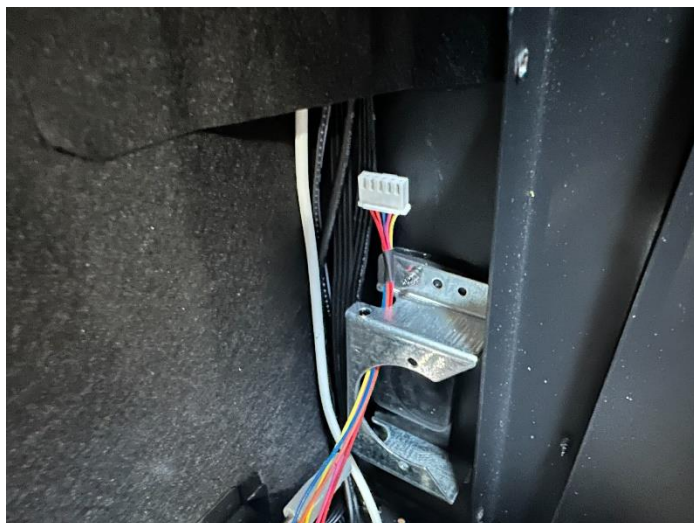
9. Remove the zip ties and screws Holding the motor to the metal housing.



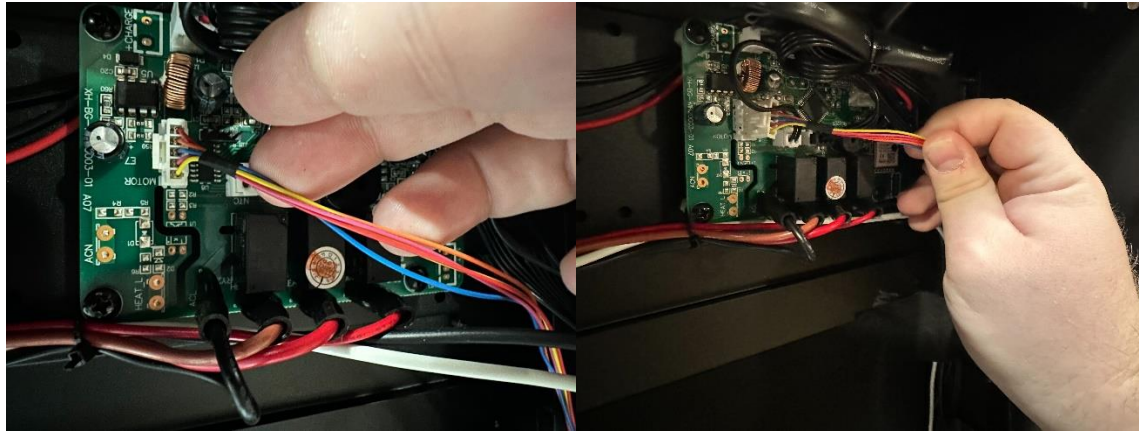
10. Follow the cord coming from the motor to separate it from the rest of the wires (it can be held to the housing of the fireplace by tape and zip ties). Then unplug it from the motherboard.



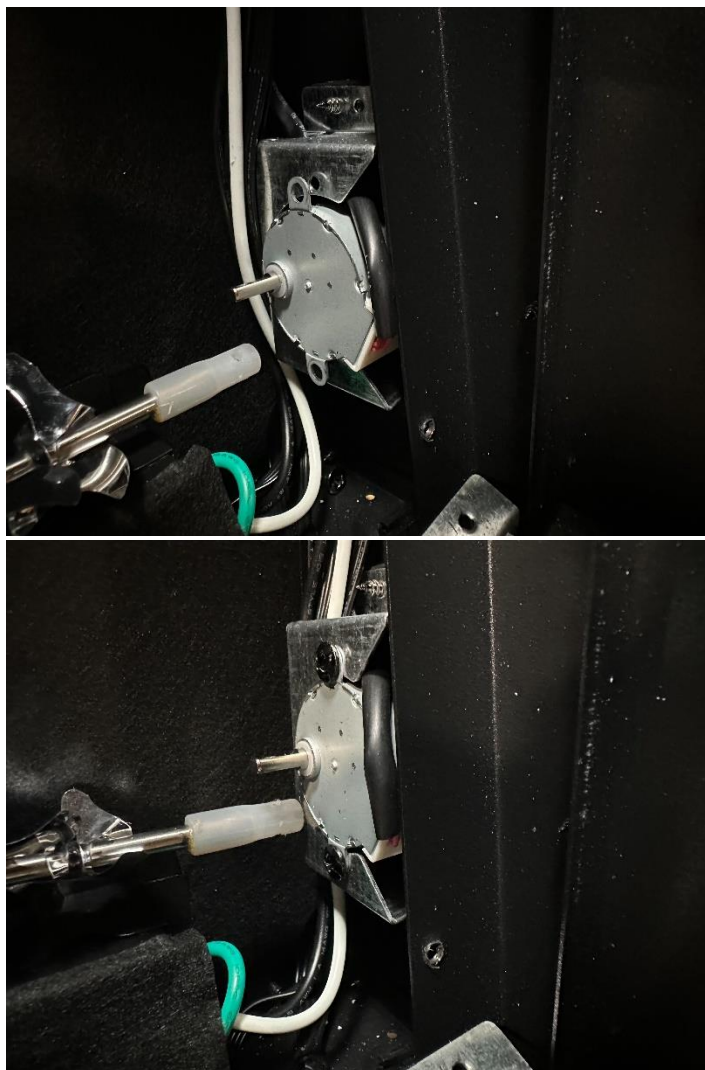
11. Run the new Motor wire back through the motor housing and back to the motherboard. (Retape the wire with the other wires to the side of the fireplace unit to keep away from the flame light area)



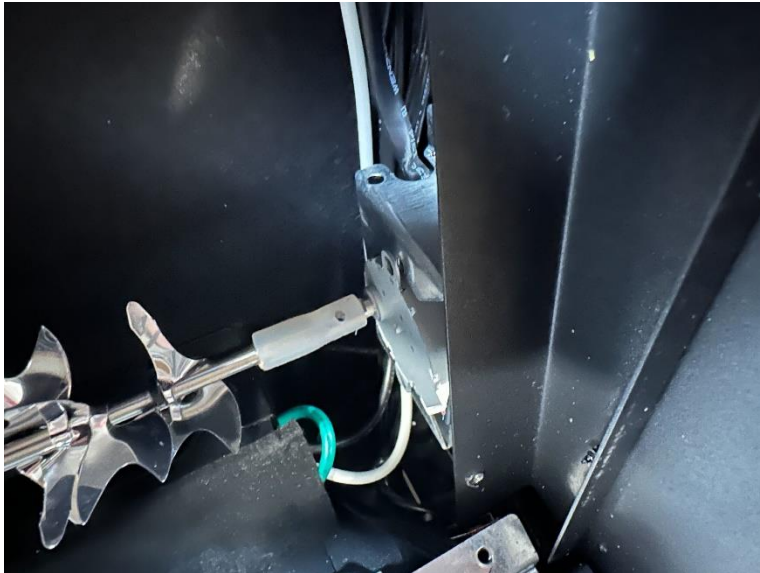
12. Plug it back into the same spot where you had previously disconnected the old motor.



13. Screw the Motor back into the Housing at the bottom. (Make sure the motor wire is kept snug to the motor and does not stick out)

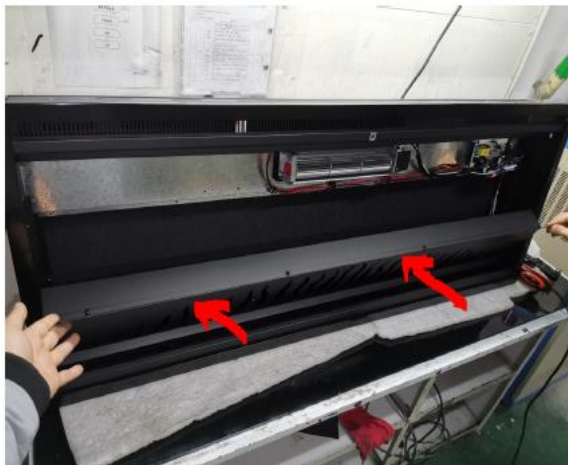


14. Reconnect the flame rod to the motor.



15. Test the motor by turning on the unit and making sure you do not hear any clicking or rubbing from the flame rod and the motor.

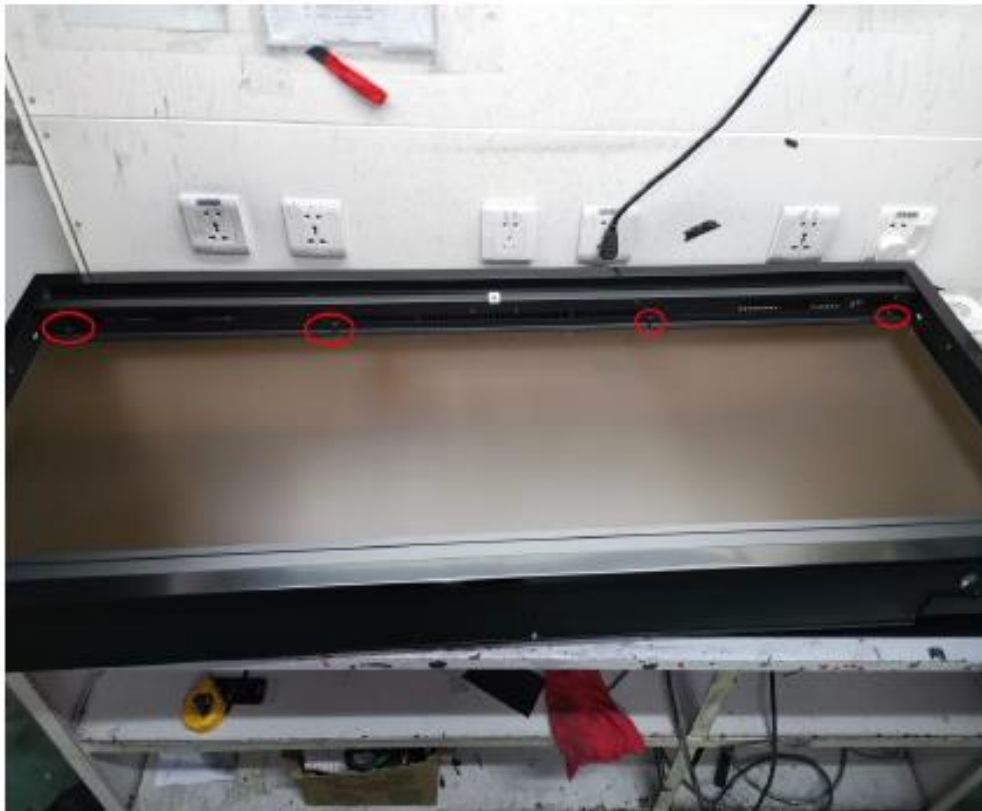
16. Once satisfied, reinstall the flame panel and refasten the 4 screws holding the panel in place. Also, ensure the black tape is secure to the panel and the back of the unit.



17. Once the flame panel is installed, reinstall the flame display board and the bar holding the bar in place.



18. Reinstall the bar at the top of the flame display panel.



19. Reinstall the 2 side panels.



20. Once the side panels are reinstalled, reinstall the log/crystals and front glass panel.



****If you have any questions, contact the technical support department at Touchstone Home Products at 800-215-1990.**