

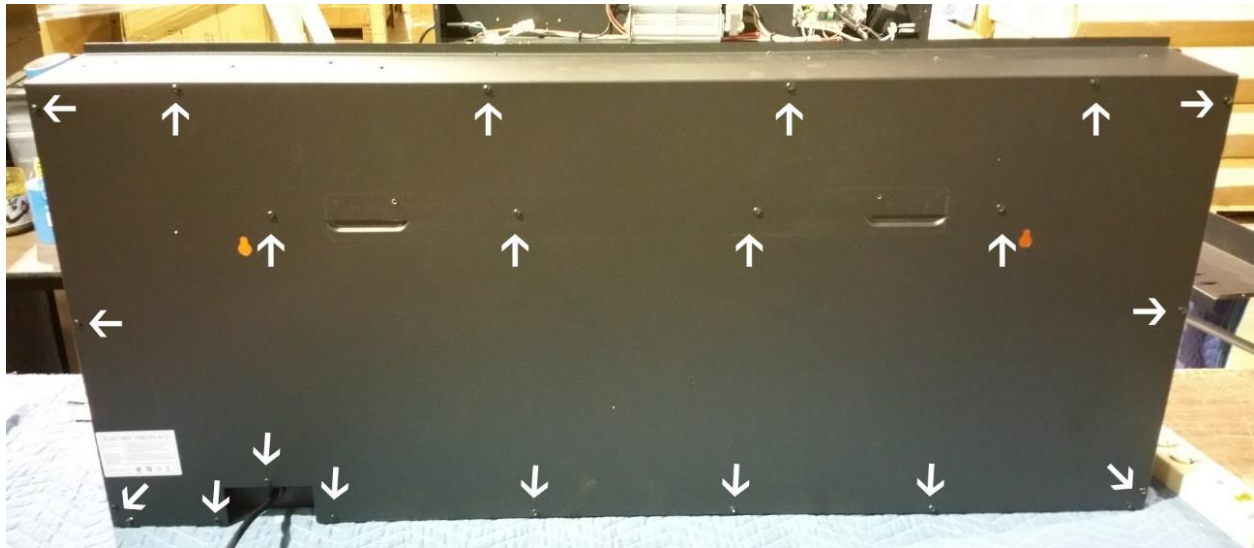
## Lubricating Flame Rod in Sideline Series Electric Fireplace

### *Tools Needed:*

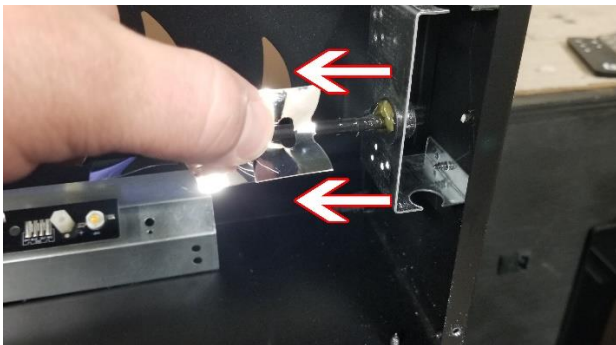
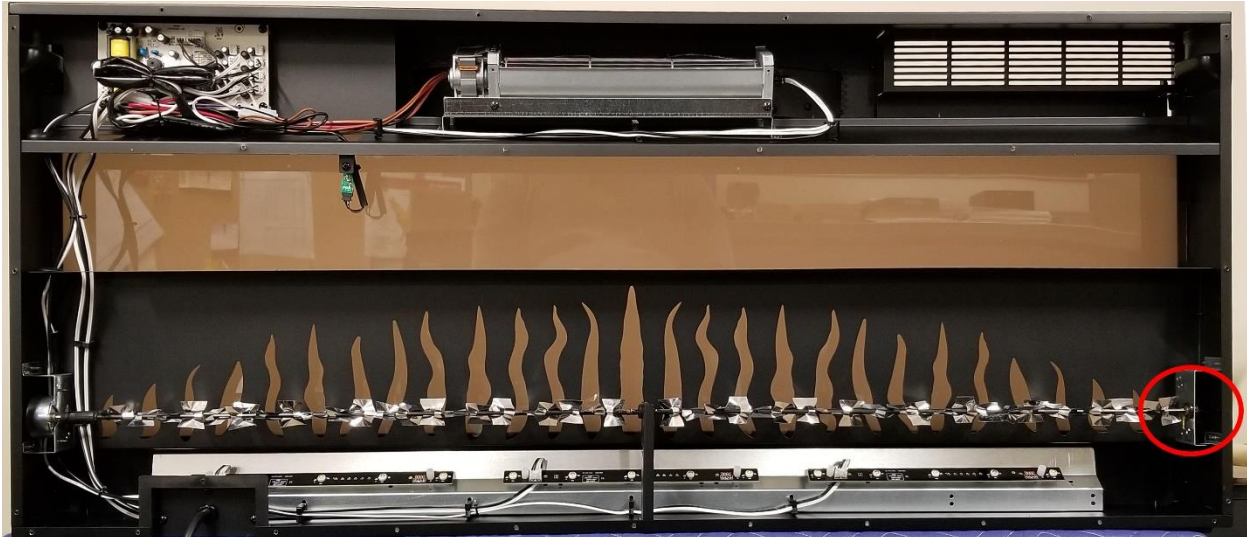
- Phillips Screwdriver
- White Lithium Grease

### *Instructions*

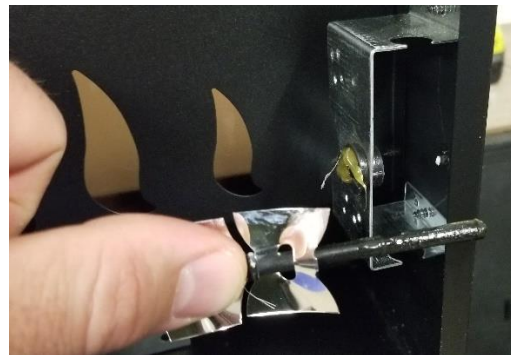
1. Turn Off Sideline Fireplace.
2. Remove glass panel from fireplace and remove fireplace from wall.
3. Remove the screws from the rear of the fireplace. The picture below shows the 80004 – Sideline50 Fireplace. For units smaller than 50”, there will be less screws, but they will all be in the same general location as the arrows below. For units larger than 50”, there will be more screws.



4. After removing the back panel, locate the grommet that holds the end of the flame rod in place.

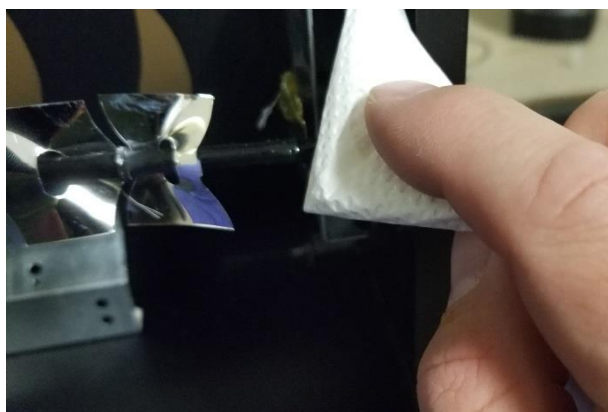


a. Slide Flame rod to left to remove from grommet

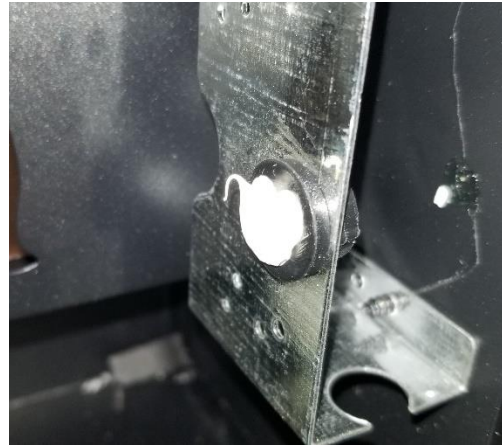


b. Flame rod removed from grommet

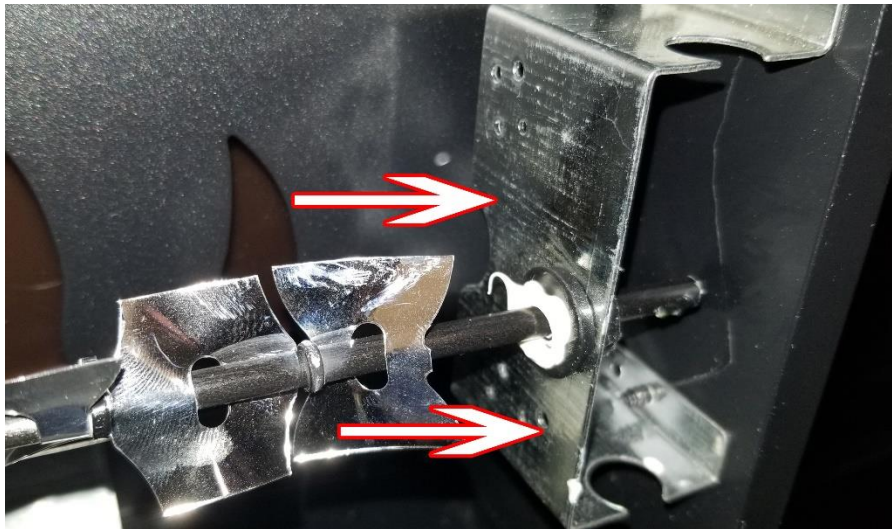
5. With the flame rod removed from grommet, clean the existing lubrication from the flame rod and flame rod grommet.



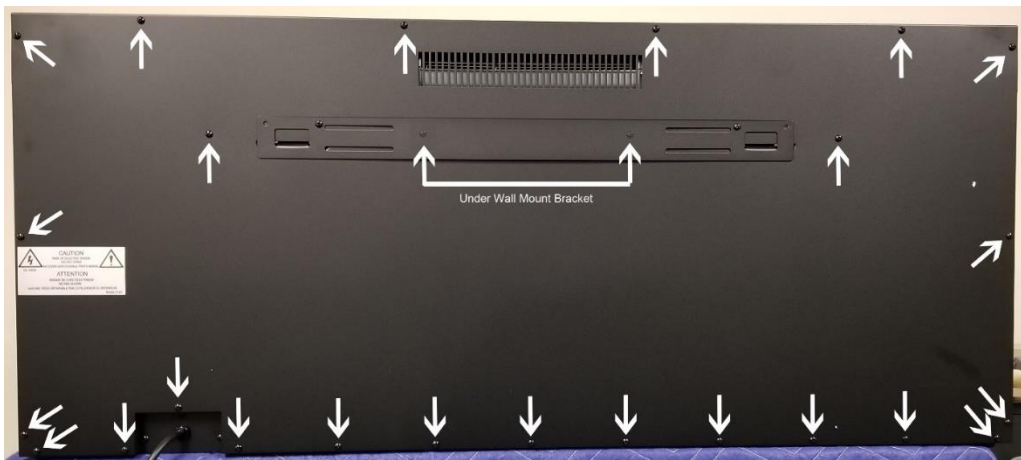
6. Place new White Lithium Grease in end flame rod grommet as shown below.



7. Reinstall end of flame rod back in flame rod grommet.



8. When satisfied, reinstall the back panel and test the fireplace.



**\*\*If you have any questions, contact the technical support department at Touchstone Home Products at 800-215-1990 option 3.**