

## Removing Flame Motor in Sideline Fireplace

### *Tools Needed*

- Phillips-head Screwdriver

### *Instructions*

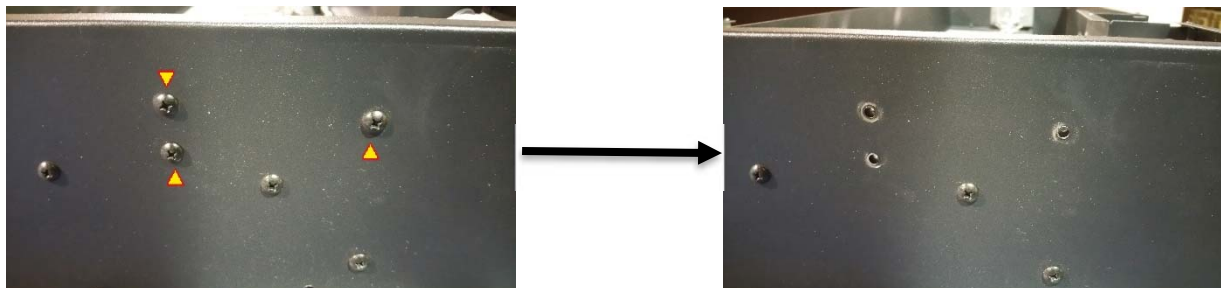
1. Turn off power to the fireplace, remove the unit from the wall, and unplug the fireplace from the wall outlet.
2. Remove back panel from the fireplace. Remove all screws shown below (depending on the size of your fireplace, there may be more screws that what is shown below).



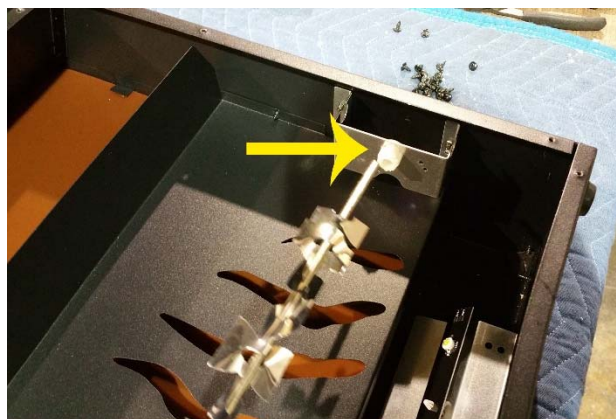
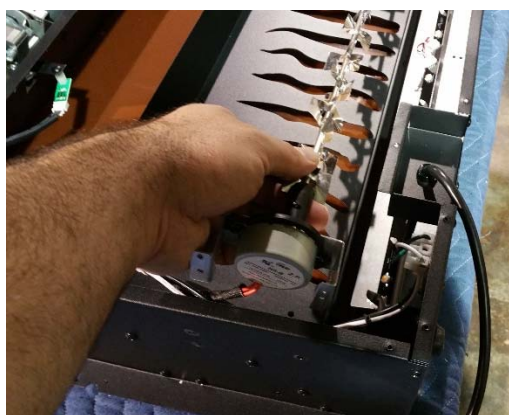
3. Once the back panel is removed, you will see the inside parts of the fireplace. The flame rod is the rod with tinsel attached.



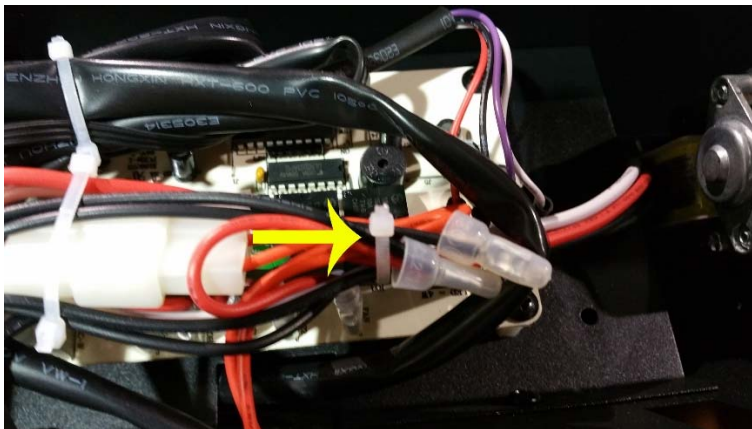
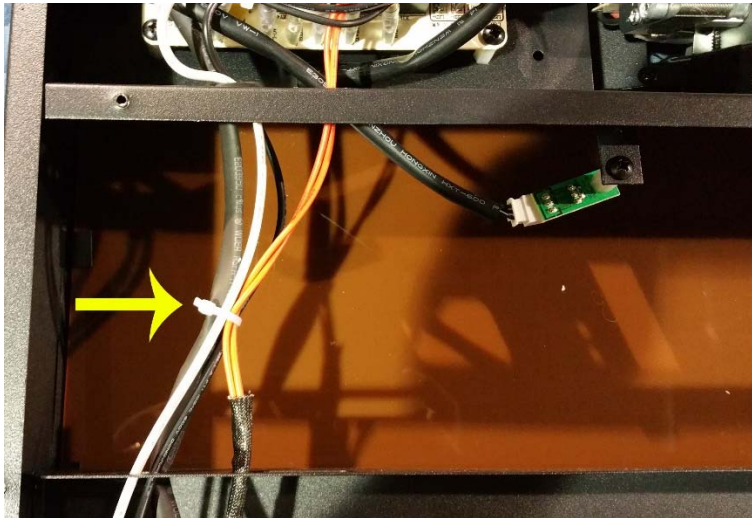
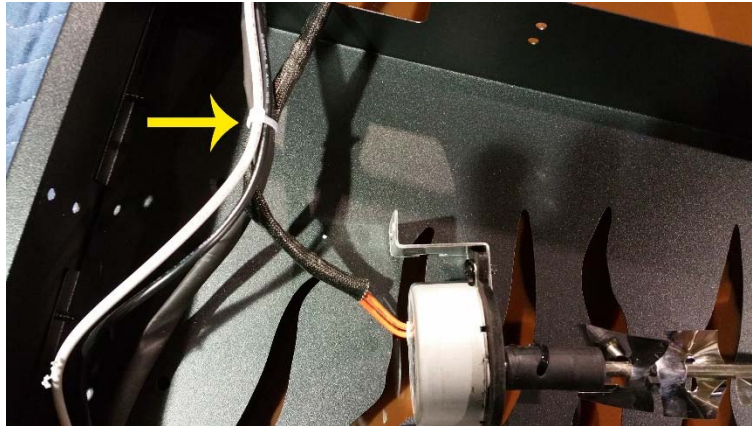
4. On the left side of the fireplace you will see a set of screws that hold the flame motor assembly in place. Remove the screws highlighted below:



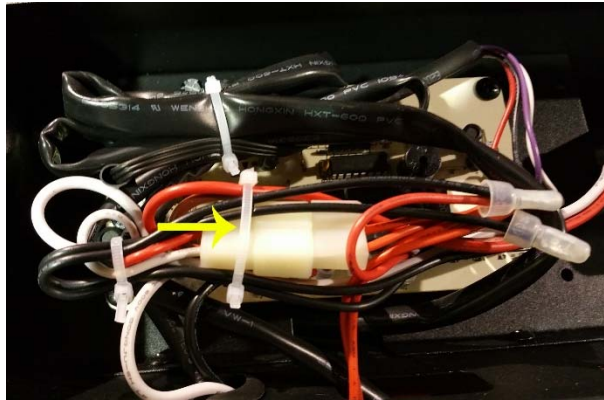
5. Once the screws are removed, remove the flame motor from the fireplace and pull the other end of the flame rod out of its holder.



6. Following the motor cable from the flame motor toward the control board, cut the zip ties shown below:



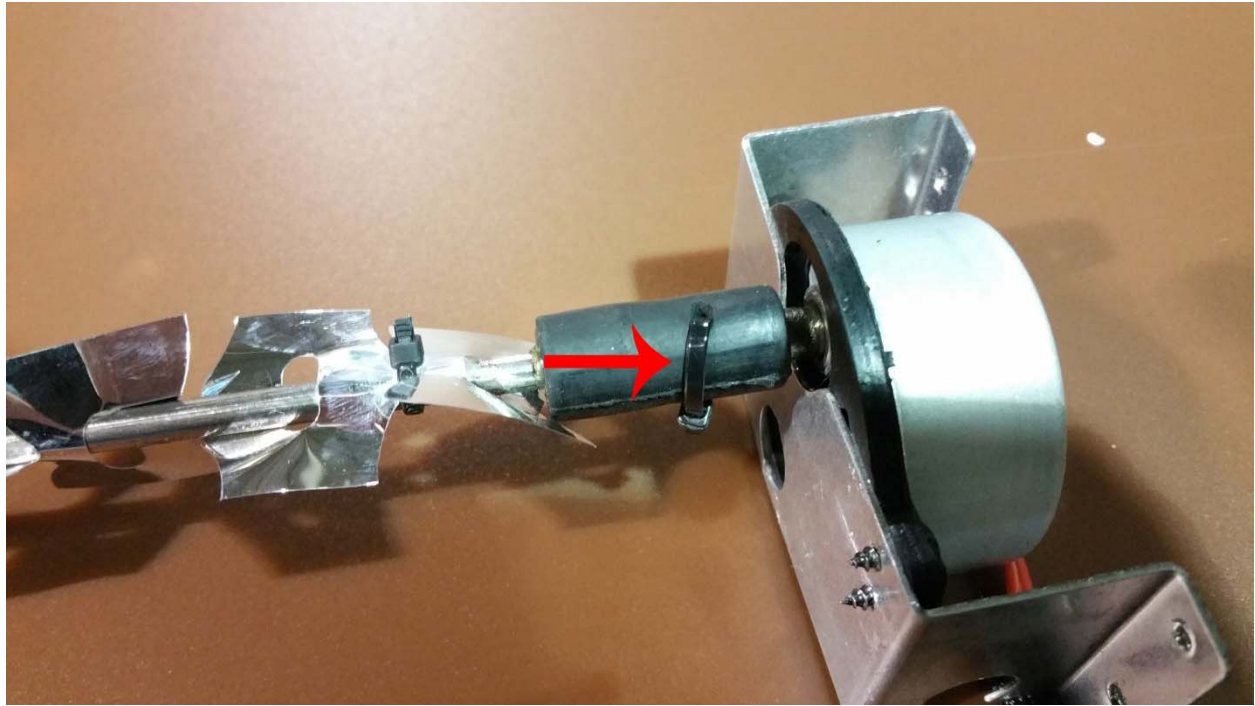
7. Cut the last zip tie around the motor connections and unplug the motor cable.



8. After disconnecting the motor cable, remove the flame rod and motor from the fireplace.



9. Where the flame rod attaches to the flame motor, remove the zip tie shown below and separate the motor from the flame rod.



**\*\*If you have any questions, contact the technical support department at Touchstone Home Products at 800-215-1990 option 2.**