

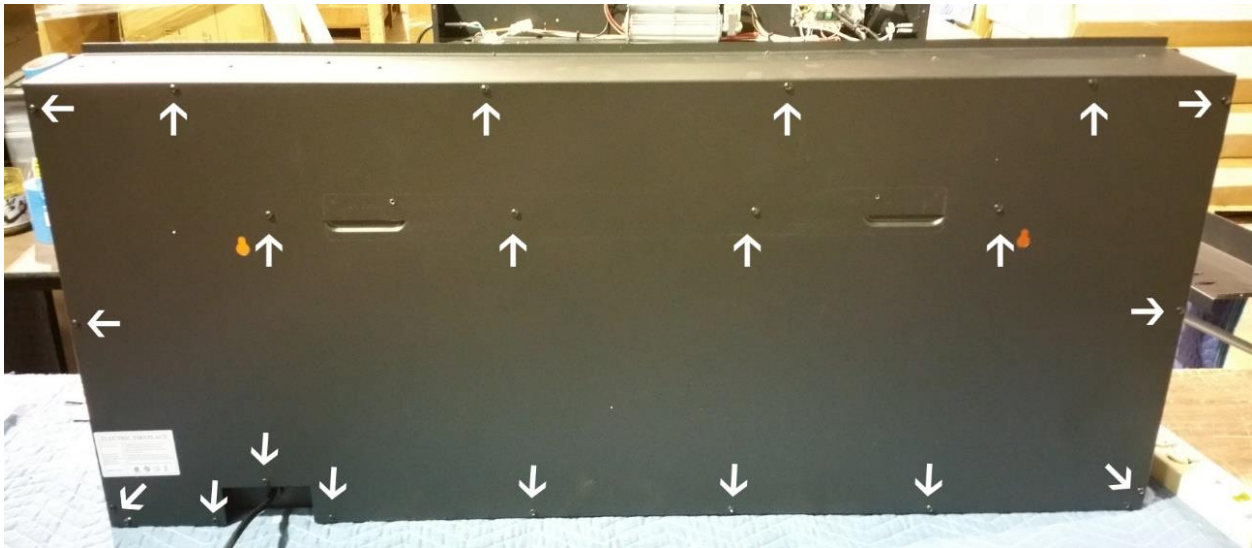
Removing Flame Rod Bracket Sideline Series Electric Fireplace

Tools Needed:

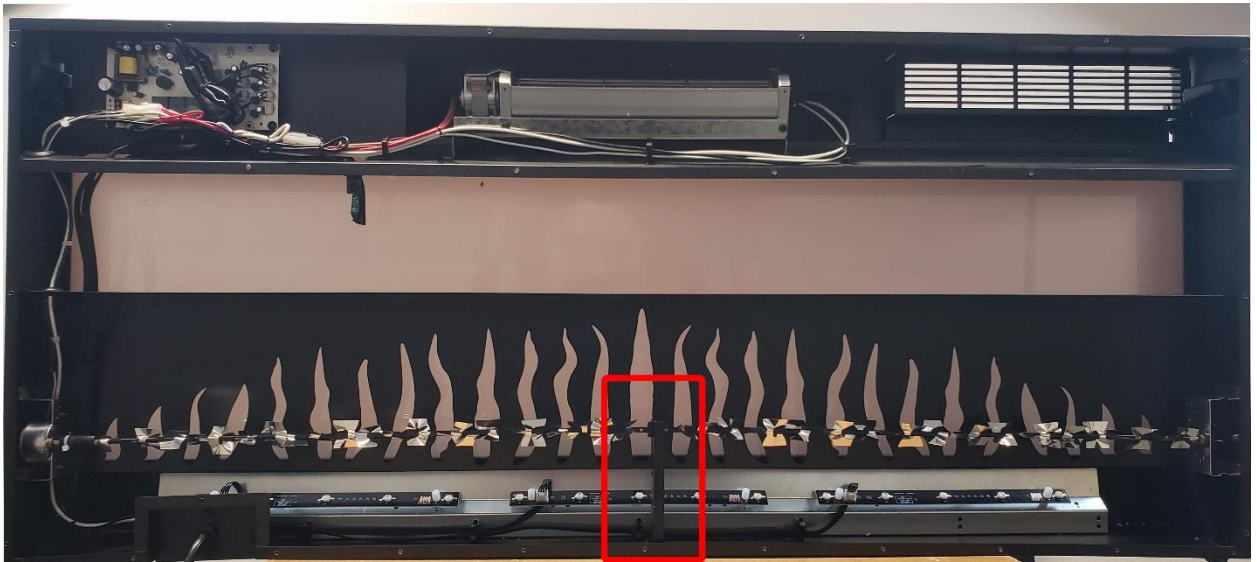
- Phillips Screwdriver
- White Lithium Grease

Instructions

1. Turn Off Sideline Fireplace.
2. Remove glass panel from fireplace and remove fireplace from wall.
3. Remove the screws from the rear of the fireplace. The picture below shows the 80004 – Sideline50 Fireplace. For units smaller than 50”, there will be less screws, but they will all be in the same general location as the arrows below. For units larger than 50”, there will be more screws.

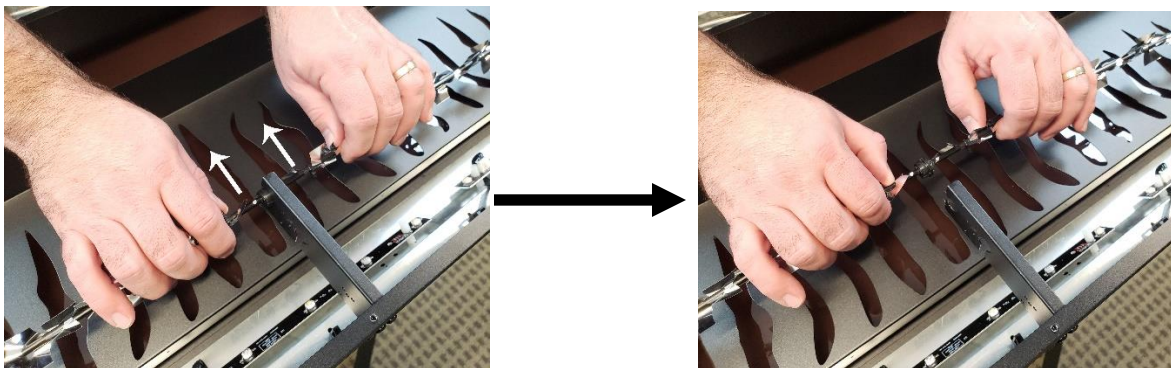


4. After removing the back panel, you will have access to the parts inside of the fireplace. The flame rod bracket is highlighted by the red rectangle below.

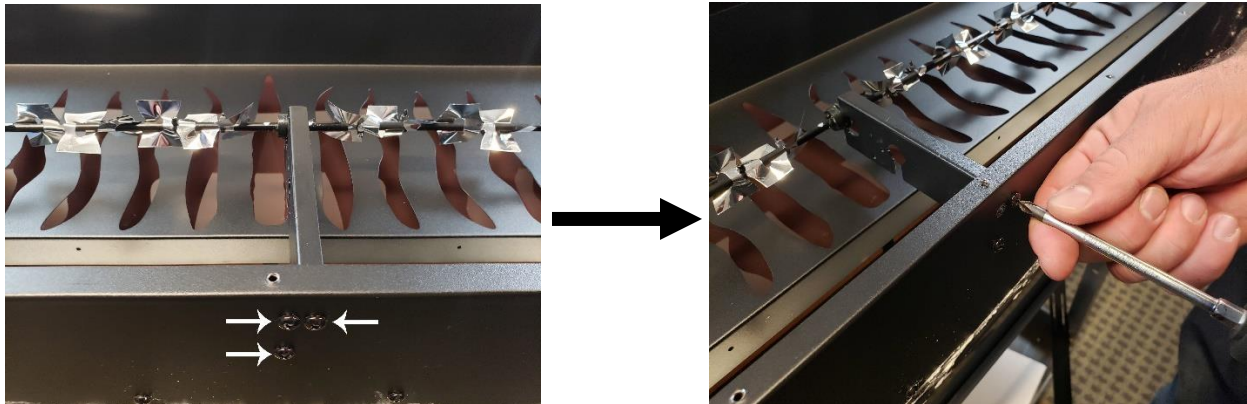


Flame Rod Bracket

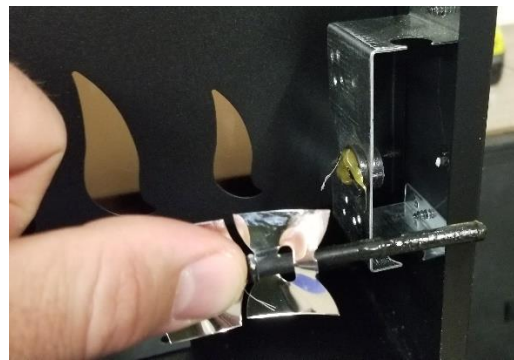
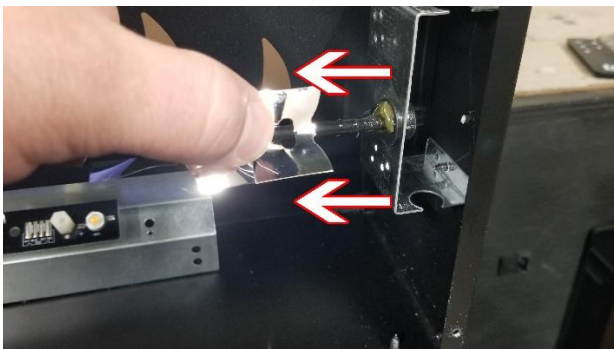
5. Remove the flame rod from the flame rod bracket. To remove the flame rod, grip the flame rod on both sides of the bracket and pull the flame rod up and out of the bracket. The rubber grommet will still be attached to the flame rod.



6. Once the flame rod is removed from the flame rod bracket, remove the bracket from the fireplace. Remove the 3 screws from the underneath side of the fireplace to remove the bracket.



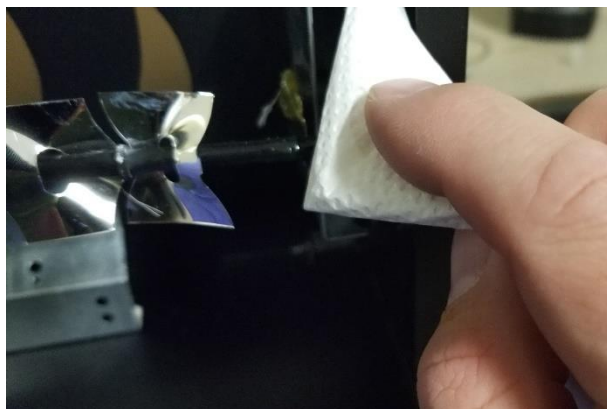
7. Once the flame rod bracket is removed, locate the grommet that holds the end of the flame rod in place and lubricate the end of the flame rod. To do so, first remove the flame rod from the bracket holding the flame rod in place, as shown below.



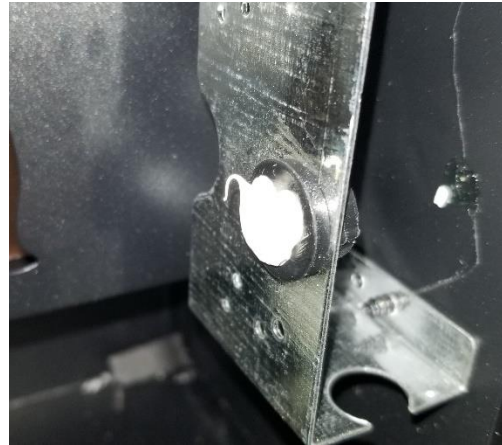
a. Slide Flame rod to left to remove from grommet

b. Flame rod removed from grommet

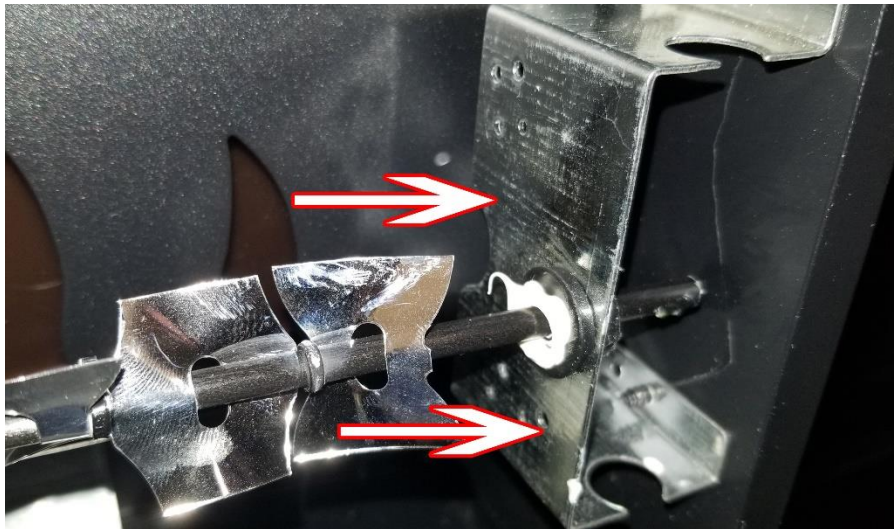
8. With the flame rod removed from grommet, clean the existing lubrication from the flame rod and flame rod grommet.



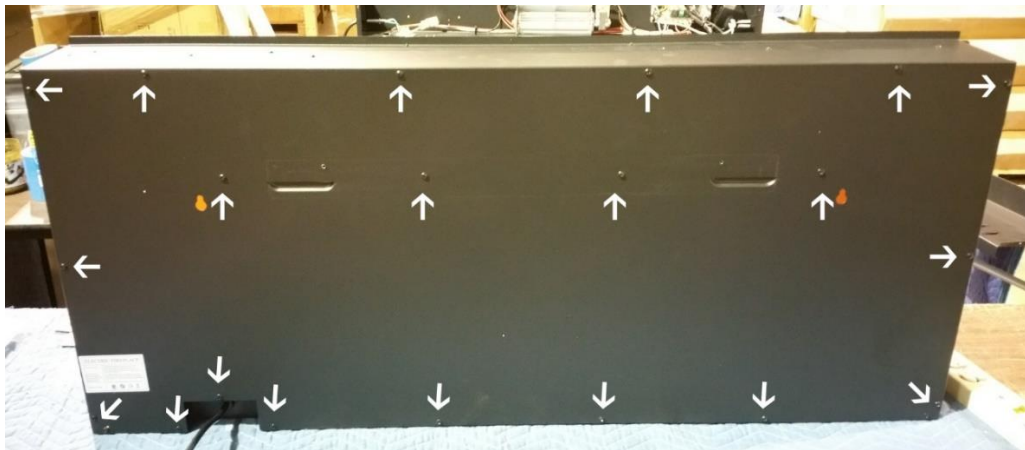
9. Place new White Lithium Grease in end flame rod grommet as shown below.



10. Reinstall end of flame rod back in flame rod grommet.



11. Once completed, the back panel and test the fireplace. Once satisfied, remount the fireplace.



****If you have any questions, contact the technical support department at Touchstone Home Products at 800-215-1990**