

Replacing LED Light Strips – Sideline Series Fireplaces

Tools Required:

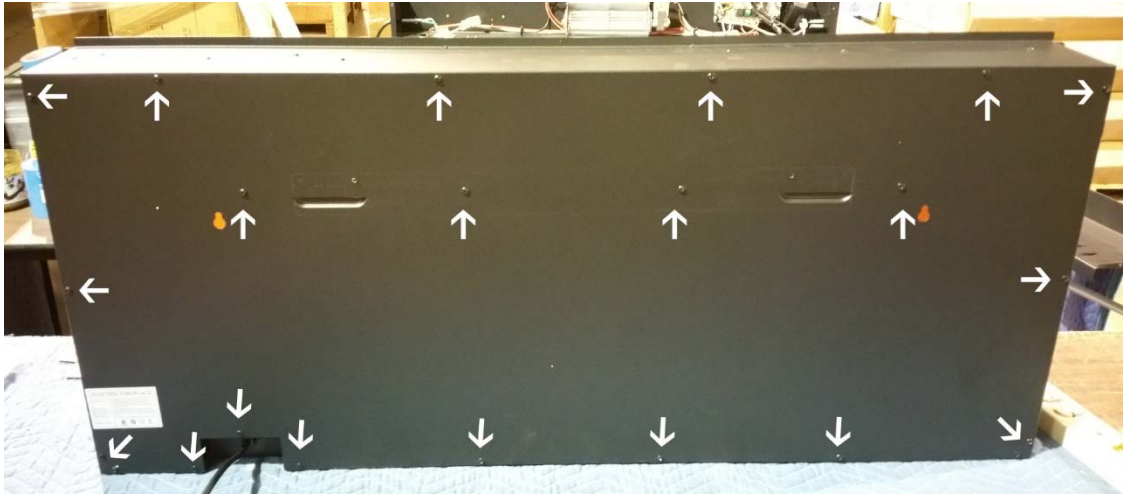
- Philips-head screw driver
- Needle-nose pliers

Instructions:

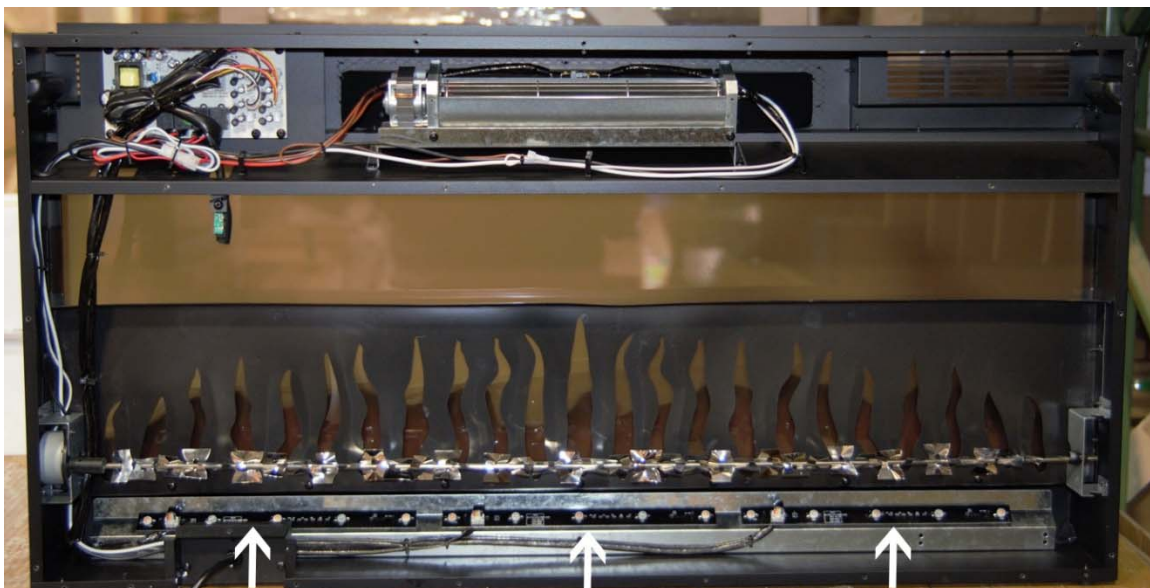
1. Unplug fireplace and remove from wall.
- 2 Remove the mounting bracket on the back of the fireplace by removing the 2 screws shown below:



3. Remove the rear panel on the fireplace by removing the screws shown below:



4. After the rear panel is removed, you will have access to the light strips. The arrows point to the light strips installed.



5. Unplug the power connection from the failing light strip.



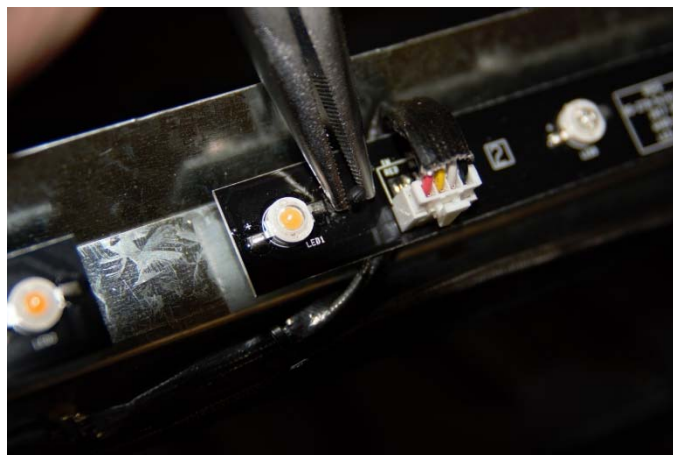
6. Once the light strip is unplugged, locate the 2 standoffs holding each light strip to the fireplace frame.



7. Using a pair of needle-nose pliers, pinch each standoff and lift the light strip UP to unhook the light strip from the standoffs.



Light strip standoff



Pinch with needle-nose pliers and lift light strip UP to remove.

8. Once the defective light strip is removed, install the new strip and test before closing the fireplace back up.

****If you have any questions, contact the technical support department at Touchstone Home Products at 800-215-1990 option 3.**