

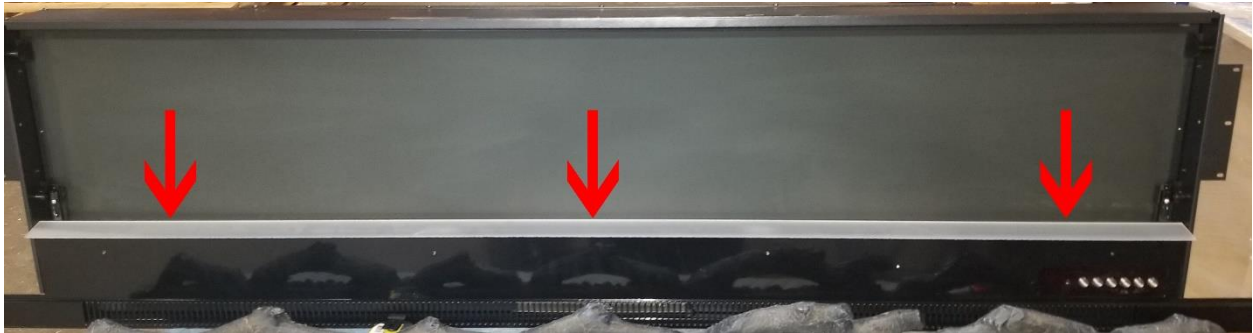
Replacing Flame Ember Lights in ValueLine Series Fireplace

Tools Needed

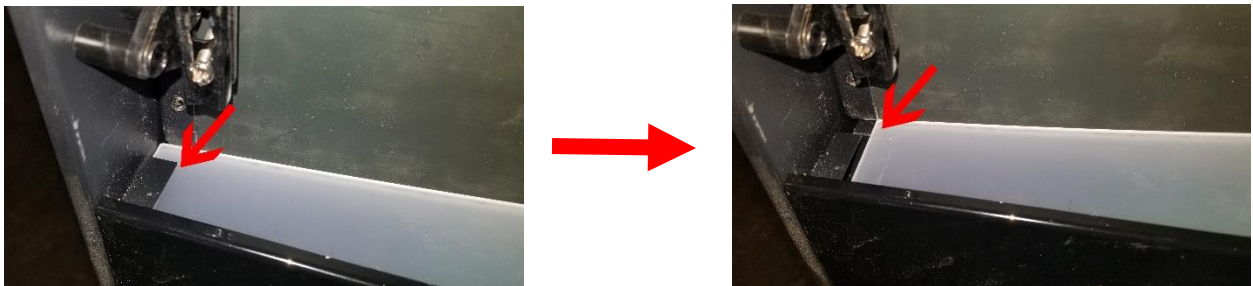
- Phillips-head Screwdriver

Instructions

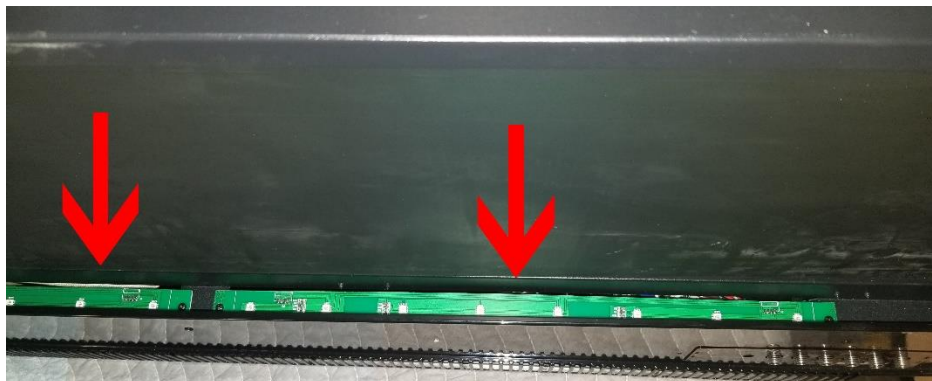
1. Power OFF the fireplace.
2. Remove the glass panel from the fireplace. See your user manual for removing the glass panel from the fireplace.
3. Once the glass panel is removed, remove the logs and/or crystals from the fireplace.
4. After the logs/crystals are removed, remove the white strip that sits under the log/crystals.



5. To remove the white strip, pry the strip up so that it removes from the 2 side clips and pulls straight up.



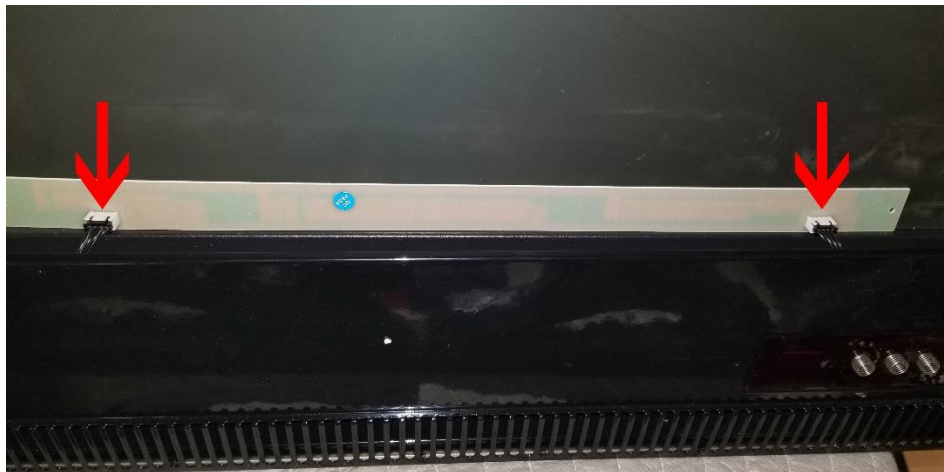
6. Once the strips are removed, you will have access to the flame ember light strips.



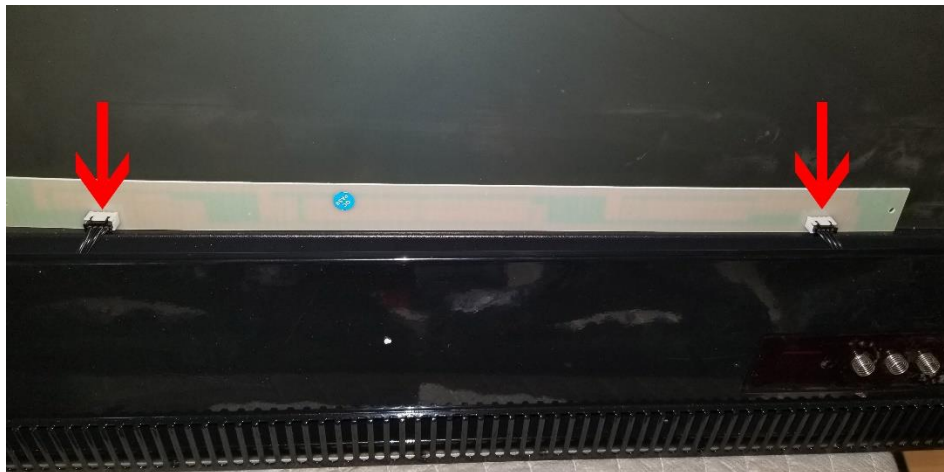
6. Remove the screws holding the defective ember light strip in place.



7. Once the light strip screws are removed, remove the light strip from the fireplace. There will be 2 connectors on the bottom side of the light strip. Unhook the connector(s) from the light strip.



8. Once the connectors are unhooked, replace the LED light strip with a new working strip and reinstall both connections to the LED light strip.



9. Place the LED strip back in place and reattach the 2 screws holding the light strip in place.



10. Once the strip is back in place, plug in the fireplace and test the LED lights to make sure the lights all match. Once satisfied, reinstall the white crystal strip. Slide each end of the strip into the clips at each end of the fireplace opening.



11. Once the strip is back in place, reinstall the logs/crystals and reattach the glass panel.

****If you have any questions, contact the technical support department at Touchstone Home Products at 800-215-1990 option 3.**