

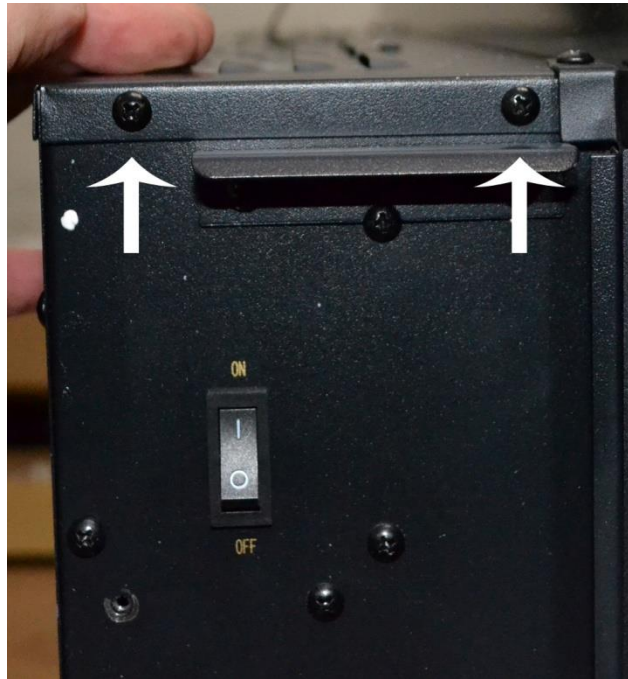
Lubricating Flame Rod - Onyx-Mirror-Ivory Fireplace

Tools Needed

- Phillips-head Screwdriver

Instructions

1. Turn off fireplace and unplug fireplace from wall.
2. Remove fireplace from wall bracket.
3. Remove glass panel (see instructions for Removing Glass Panel)
4. Remove top panel from fireplace. To remove top panel, remove the following screws:
 - a. Remove 2 screws on left side of fireplace



- b. Remove 2 screws from top of fireplace



4. Remove top panel – cont.

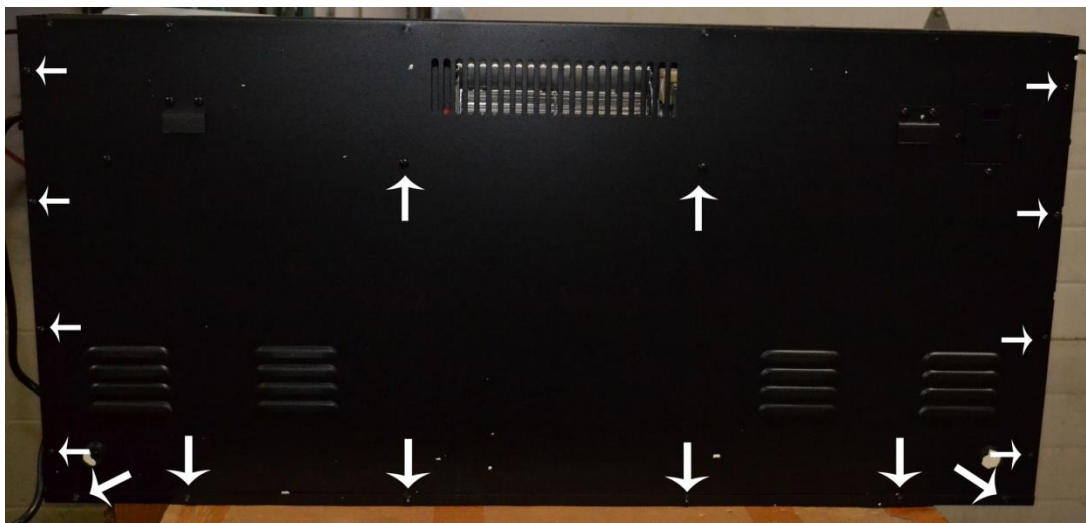
c. Remove 2 screws on right side of fireplace



d. Remove 6 screws where the top panel attaches to the back of the fireplace.



5. After removing the top panel, remove the 16 screws holding the back panel to the fireplace.



6. Remove the back panel from the fireplace.

**Note: The back panel cannot be fully removed due to the heat disable switch, slide the back panel to the side so that you have access to the flame rod behind the panel.

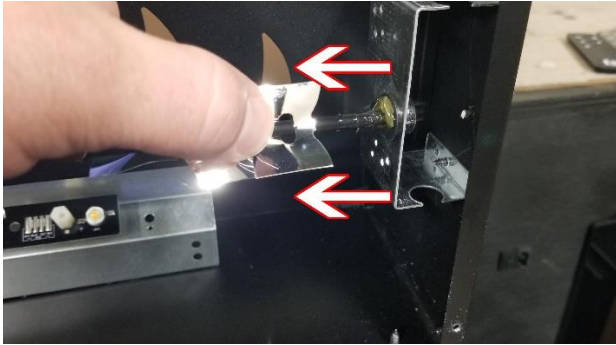
7. Once the back panel is removed, you will see the inside parts of the fireplace. The flame rod is the rod with tinsel attached.



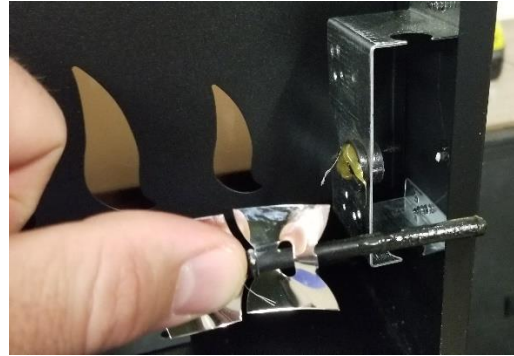
8. Remove the right end of the flame rod from the right end grommet. The grommet is circled in RED below.



9. Slide the flame rod to the left and out of the grommet holding the flame rod.

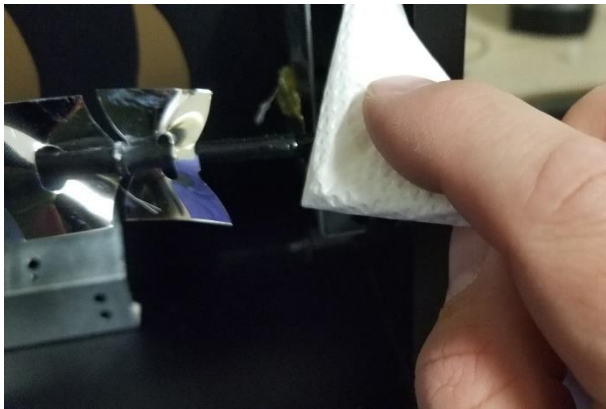


a. Slide Flame rod to left to remove from grommet

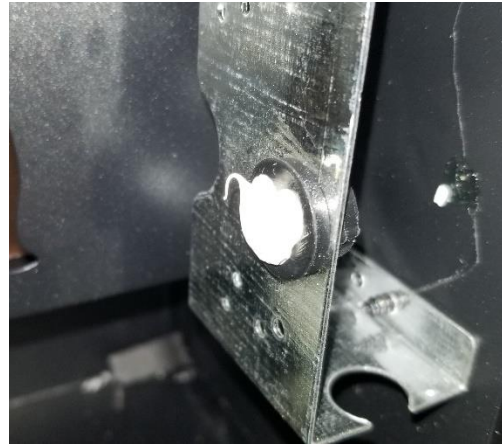


b. Flame rod removed from grommet

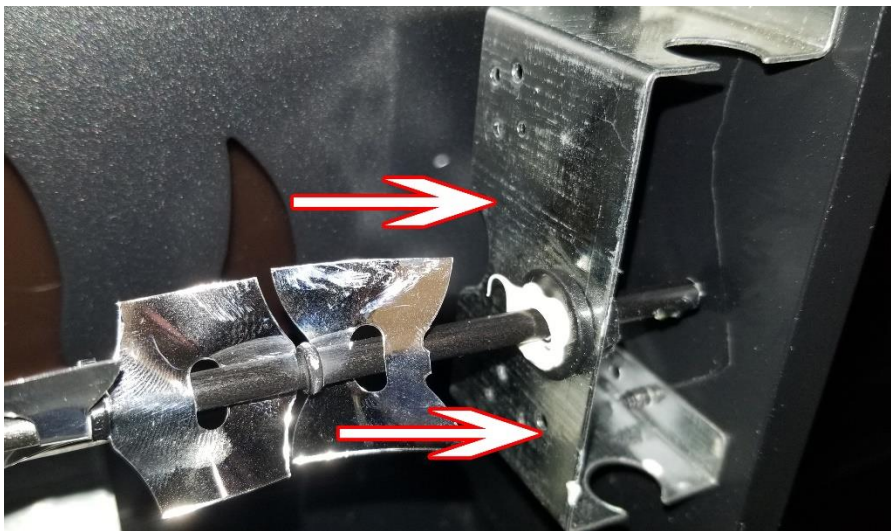
10. With the flame rod removed from grommet, clean the existing lubrication from the flame rod and flame rod grommet.



11. Place new White Lithium Grease in end flame rod grommet as shown below.



12. Reinstall end of flame rod back in flame rod grommet.



13. Test the fireplace after lubricating the flame rod. Once satisfied, reinstall the back panel of the fireplace and hang the fireplace back on the wall.

****If you have any questions, contact the technical support department at Touchstone Home Products at 800-215-1990 option 2.**