

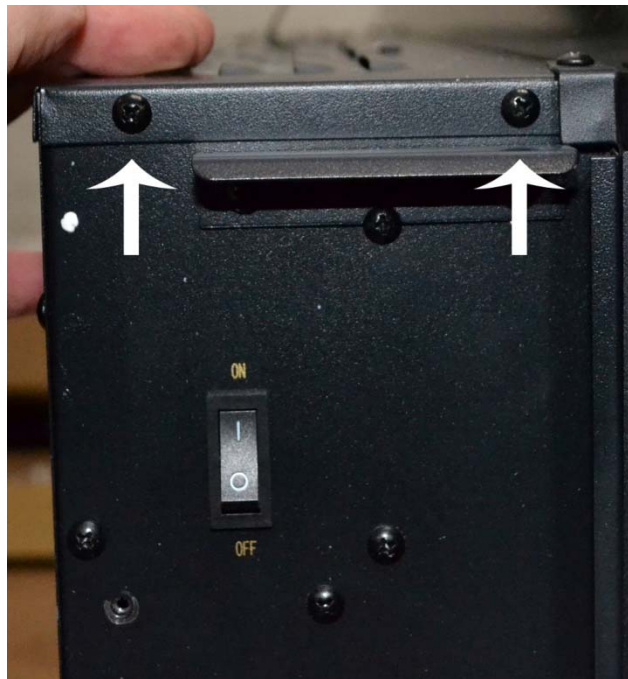
Removing Flame Motor in Onyx-Mirror-Ivory Fireplace

Tools Needed

- Phillips-head Screwdriver

Instructions

1. Turn off fireplace and unplug fireplace from wall.
2. Remove fireplace from wall bracket.
3. Remove glass panel (see instructions for Removing Glass Panel)
4. Remove top panel from fireplace. To remove top panel, remove the following screws:
 - a. Remove 2 screws on left side of fireplace



- b. Remove 2 screws from top of fireplace



4. Remove top panel – cont.

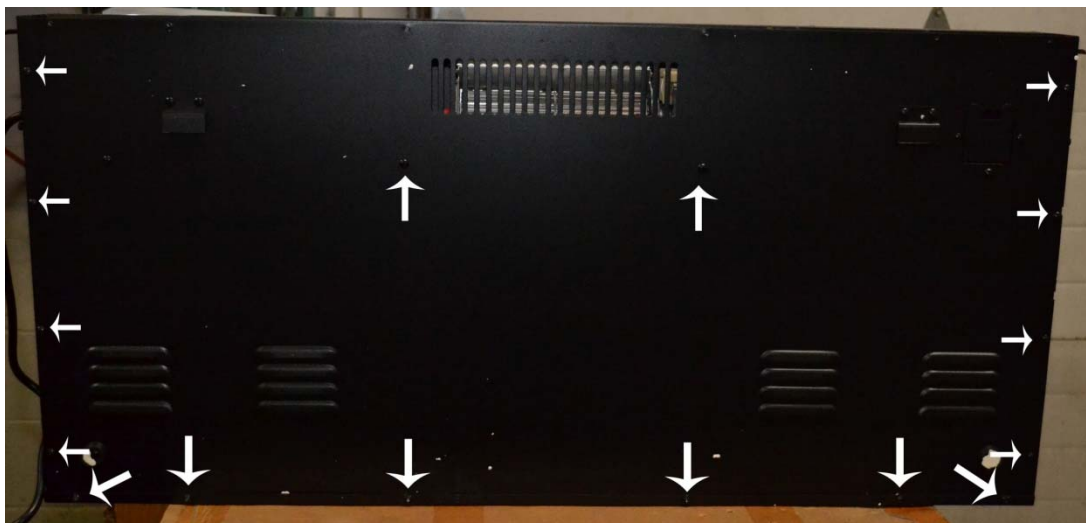
c. Remove 2 screws on right side of fireplace



d. Remove 6 screws where the top panel attaches to the back of the fireplace.



5. After removing the top panel, remove the 16 screws holding the back panel to the fireplace.



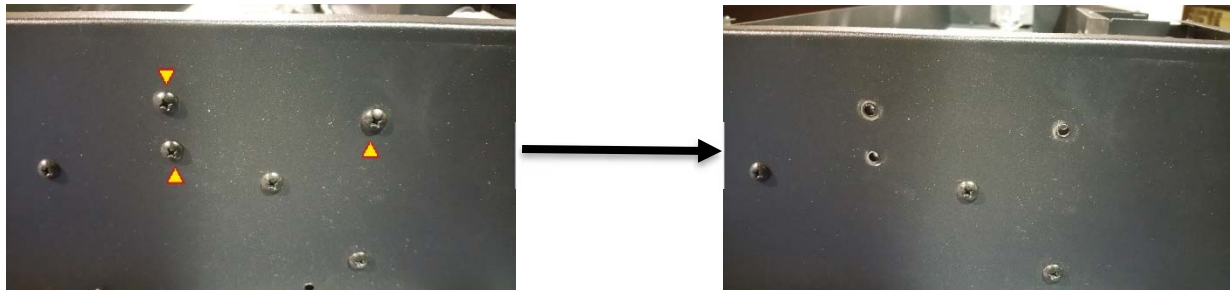
6. Remove the back panel from the fireplace.

**Note: The back panel cannot be fully removed due to the heat disable switch, slide the back panel to the side so that you have access to the flame rod behind the panel.

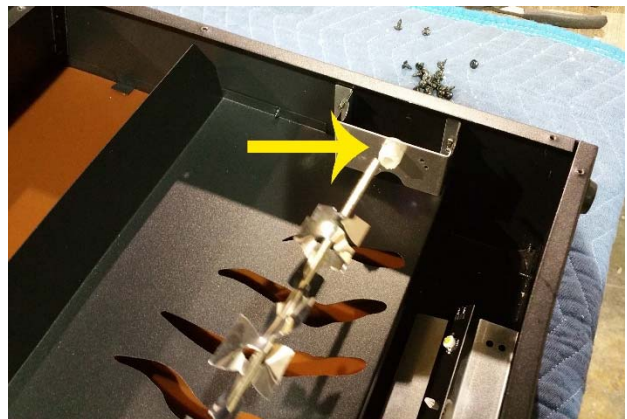
7. Once the back panel is removed, you will see the inside parts of the fireplace. The flame rod is the rod with tinsel attached.



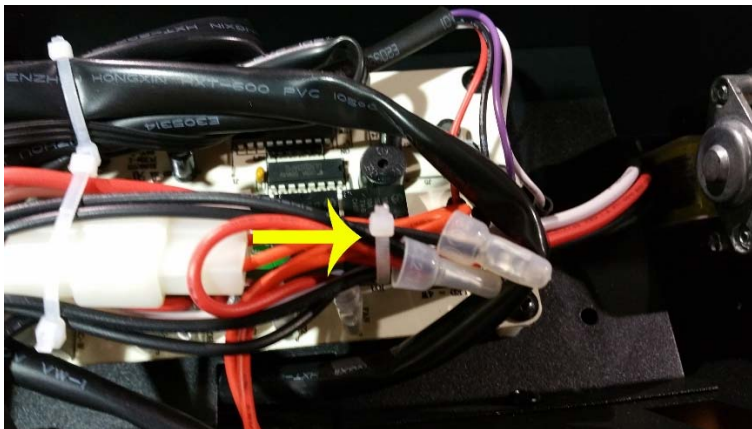
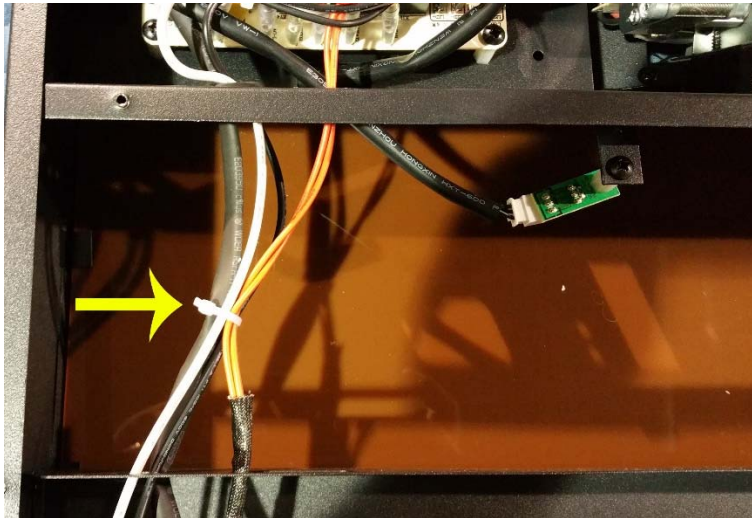
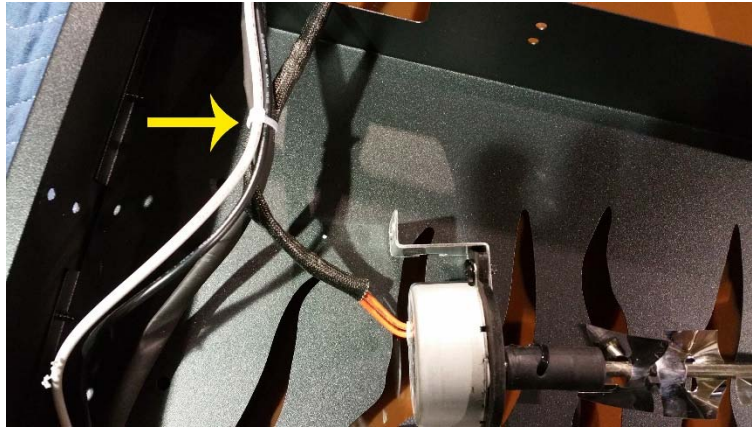
8. On the left side of the fireplace you will see a set of screws that hold the flame motor assembly in place. Remove the screws highlighted below:



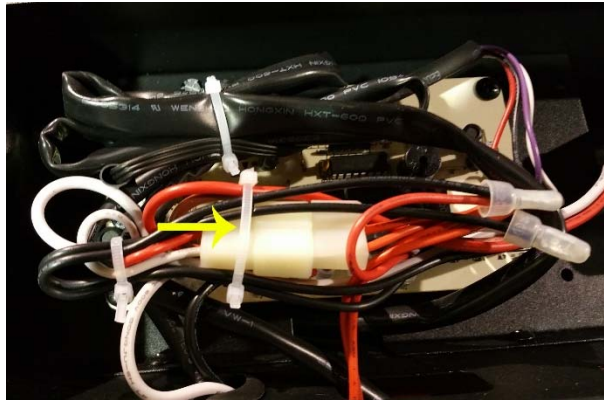
9. Once the screws are removed, remove the flame motor from the fireplace and pull the other end of the flame rod out of its holder.



10. Following the motor cable from the flame motor toward the control board, cut the zip ties shown below:



11. Cut the last zip tie around the motor connections and unplug the motor cable.



12. After disconnecting the motor cable, remove the flame rod and motor from the fireplace.



13. Where the flame rod attaches to the flame motor, remove the zip tie show below and separate the motor from the flame rod.



****If you have any questions, contact the technical support department at Touchstone Home Products at 800-215-1990 option 2.**