

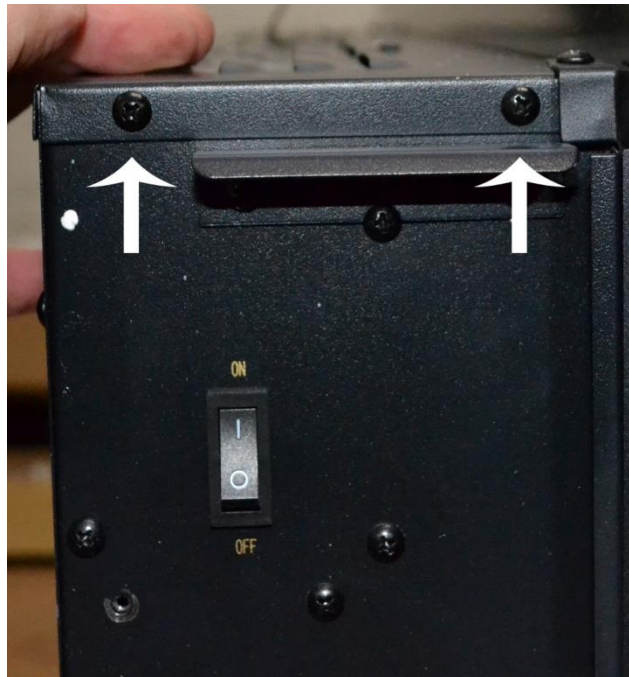
## Replacing IR Sensor – Onyx/Ivory/Mirror/Onyx Stainless

### *Tools Needed*

- Phillips-head Screwdriver

### *Instructions*

1. Turn off fireplace and unplug fireplace from wall.
2. Remove fireplace from wall bracket.
3. Remove glass panel (see instructions for Removing Glass Panel)
4. Remove top panel from fireplace. To remove top panel, remove the following screws:
  - a. Remove 2 screws on left side of fireplace



- b. Remove 2 screws from top of fireplace



4. Remove top panel – cont.

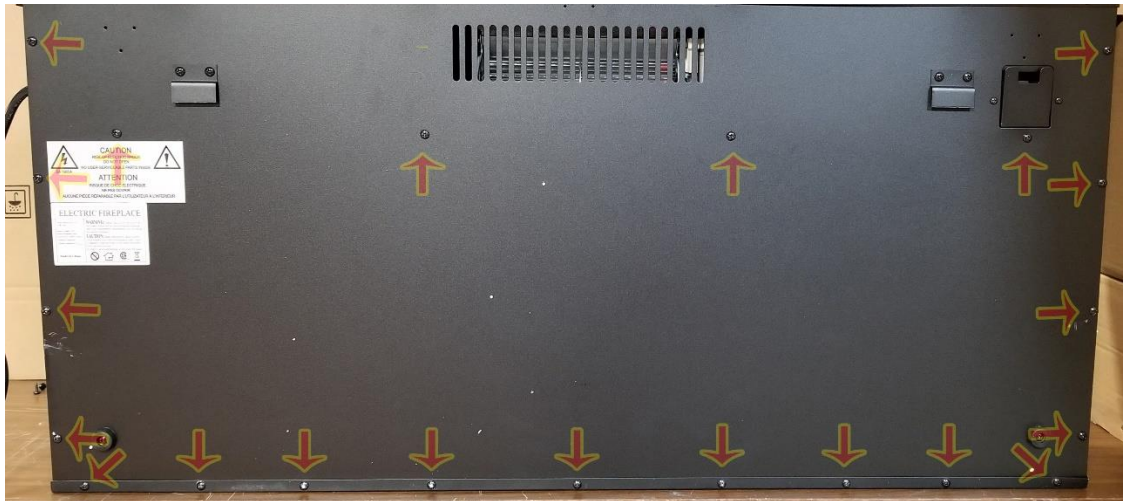
c. Remove 2 screws on right side of fireplace



d. Remove 6 screws where the top panel attaches to the back of the fireplace.

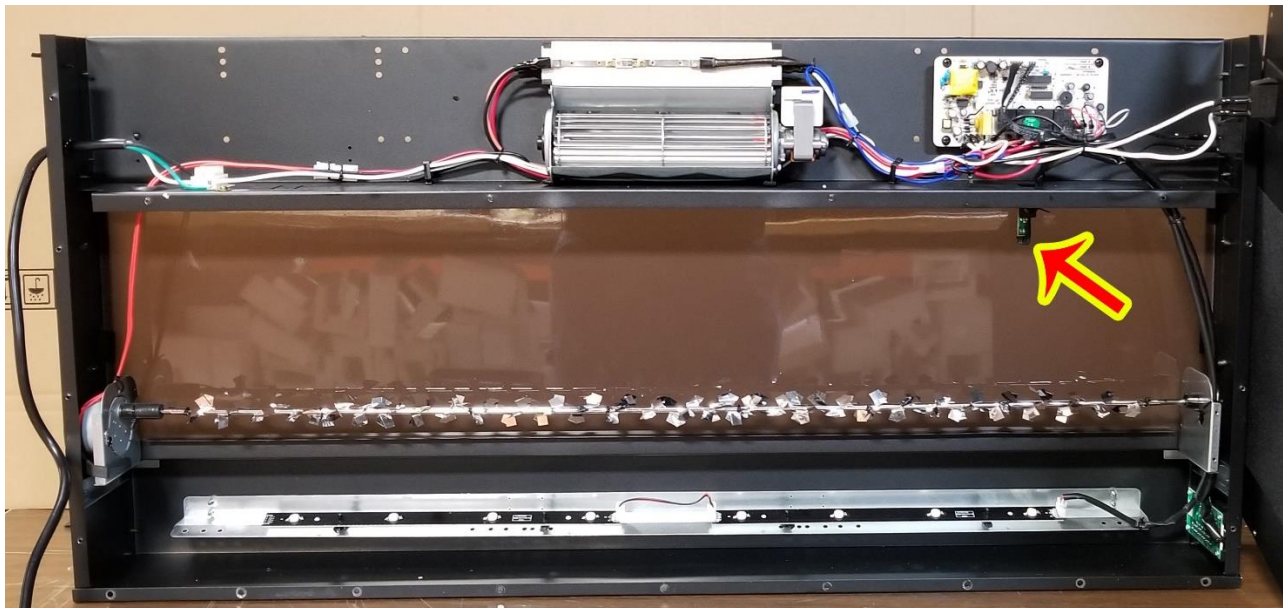


5. After removing the top panel, remove the remaining screws holding the back panel to the fireplace and remove the rear panel from the fireplace.

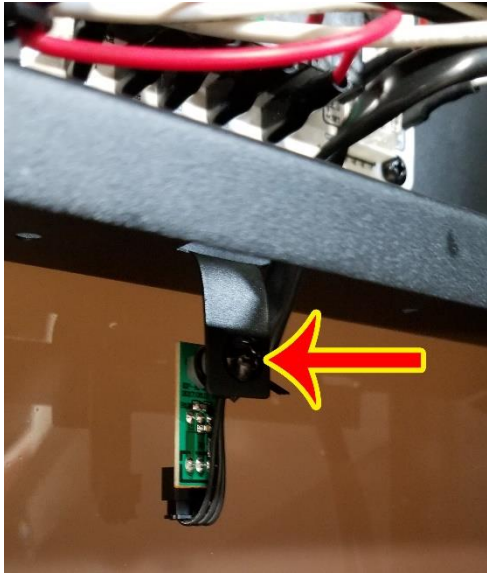


\*\*Note: The back panel cannot be fully removed due to the heat disable switch, slide the back panel to the side so that you have access to the inside of the fireplace.

6. With the back panel out of the way, locate the IR Sensor



7. Remove the screw holding the IR sensor to the case.

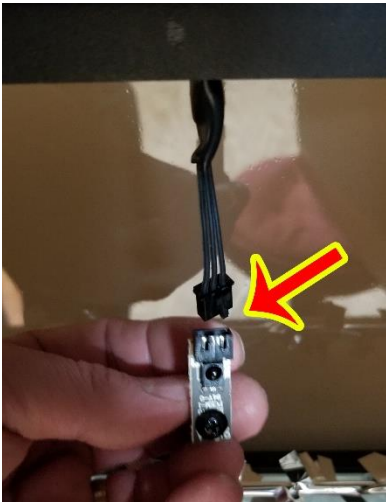


**Screw holding IR Sensor**

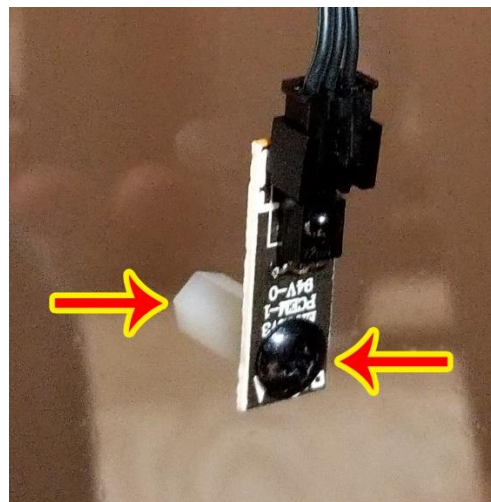


**IR Sensor**

8. Unplug the IR sensor and remove the screw and standoff from the IR sensor.

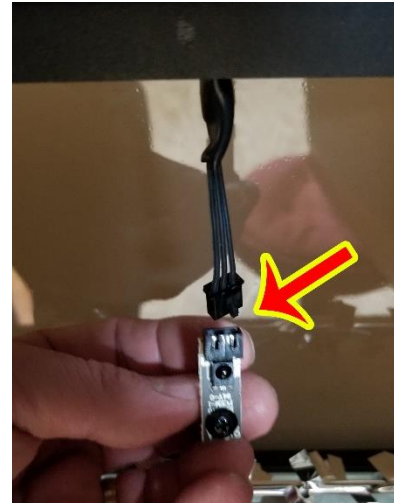
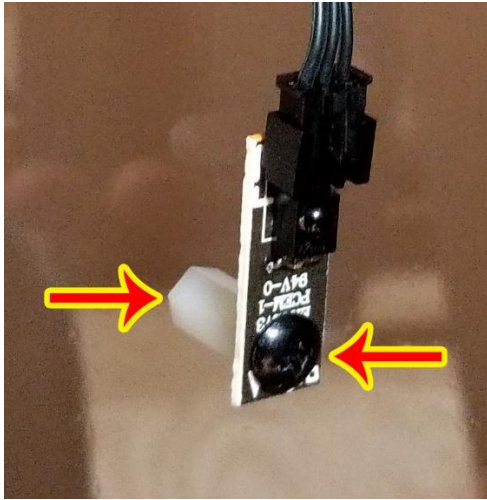


**Detach IR Sensor Cable**



**Remove screw and standoff**

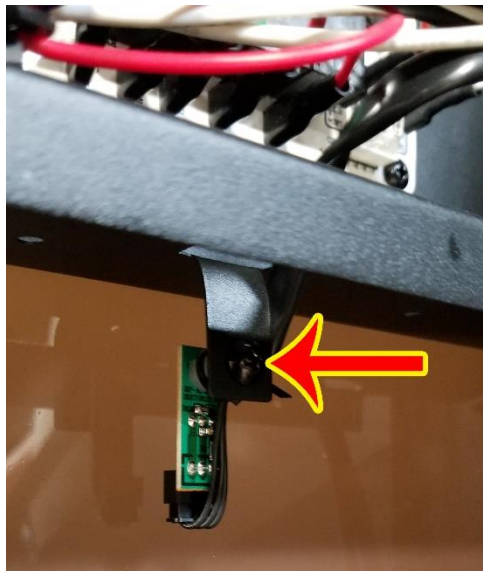
9. Attach the screw and standoff to the new IR sensor and plug the IR sensor cable into the new IR sensor



**Reinstall screw and standoff**

**Reattach IR Sensor Cable**

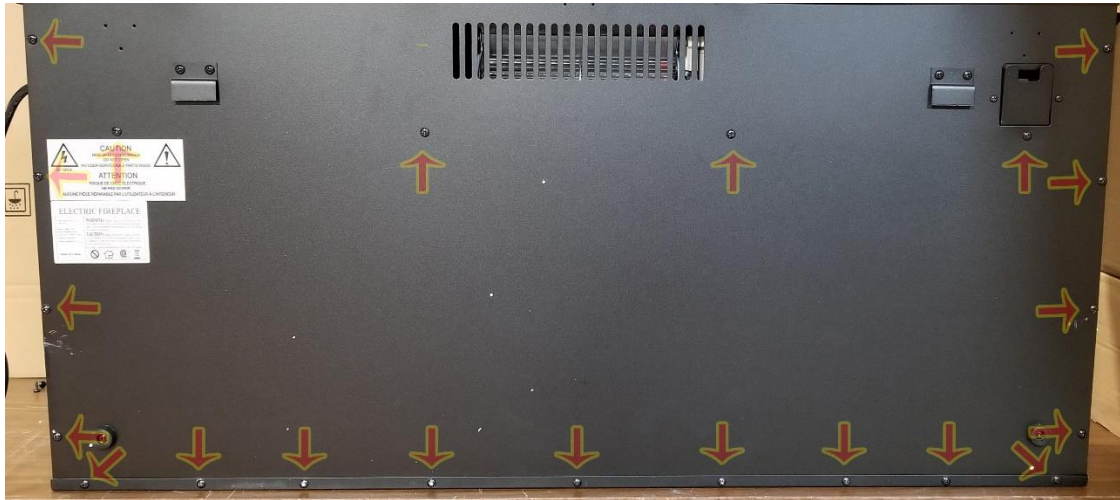
10. Reattach the IR sensor to the case



**Screw holding IR sensor**

11. Test the remote control before reinstalling the back panel.

12. Reinstall the back panel and screws.



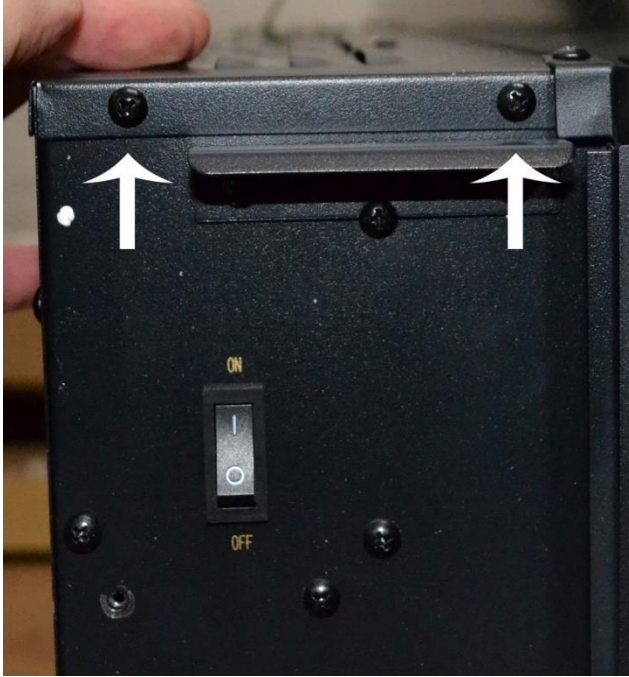
13. Reinstall the top panel on the fireplaces.

- a. Lay the top of the fireplace back on top of the fireplace.
- b. Reinstall the 2 middle screws



13. continues

c. Reinstall the 2 screws on the left side of the fireplace and 2 screws on the right side of the fireplace.



**Left Side of Fireplace**



**Right Side of Fireplace**

d. Reinstall the 6 screws across the top of the fireplace.



**\*\*If you have any questions, contact the technical support department at Touchstone Home Products at 800-215-1990 option 3.**