

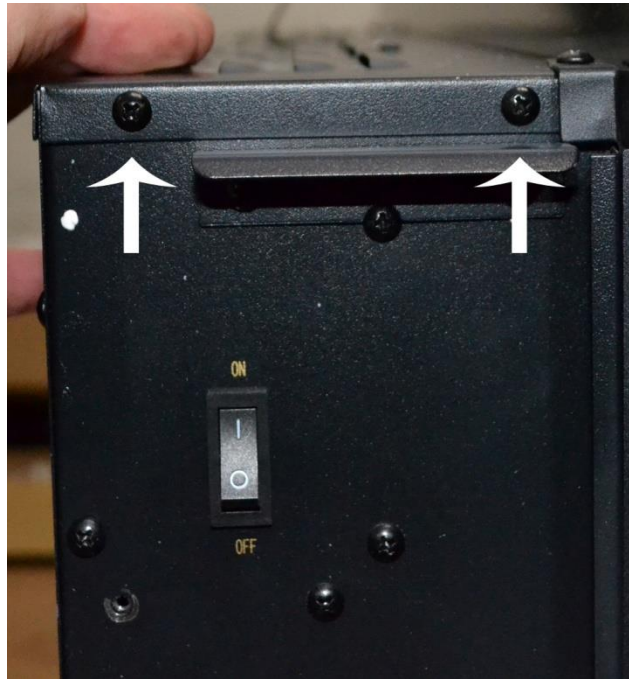
## Replacing LED Light Strips in Onyx-Mirror-Ivory Fireplace

### *Tools Needed*

- Phillips-head Screwdriver

### *Instructions*

1. Turn off fireplace and unplug fireplace from wall.
2. Remove fireplace from wall bracket.
3. Remove glass panel (see instructions for Removing Glass Panel)
4. Remove top panel from fireplace. To remove top panel, remove the following screws:
  - a. Remove 2 screws on left side of fireplace



- b. Remove 2 screws from top of fireplace



4. Remove top panel – cont.

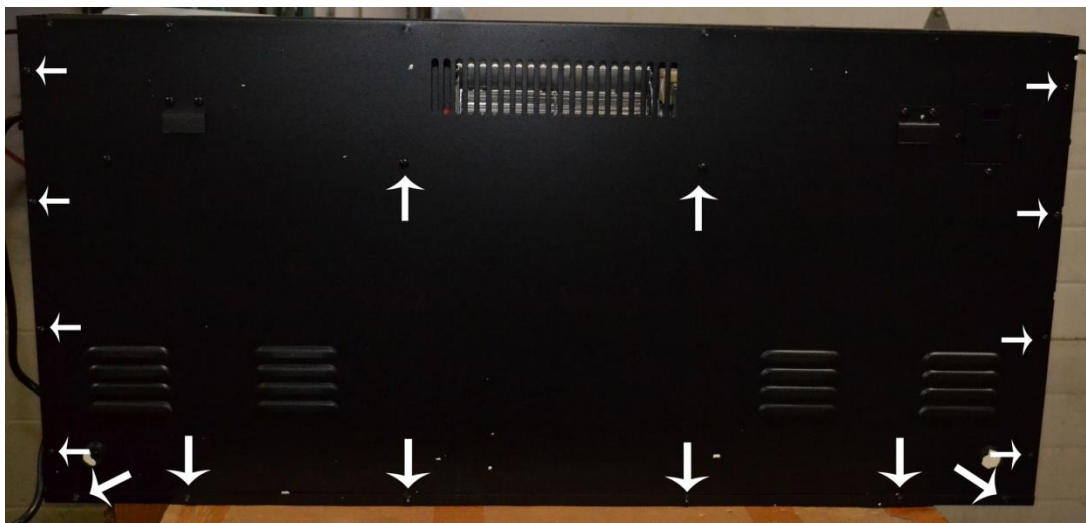
c. Remove 2 screws on right side of fireplace



d. Remove 6 screws where the top panel attaches to the back of the fireplace.



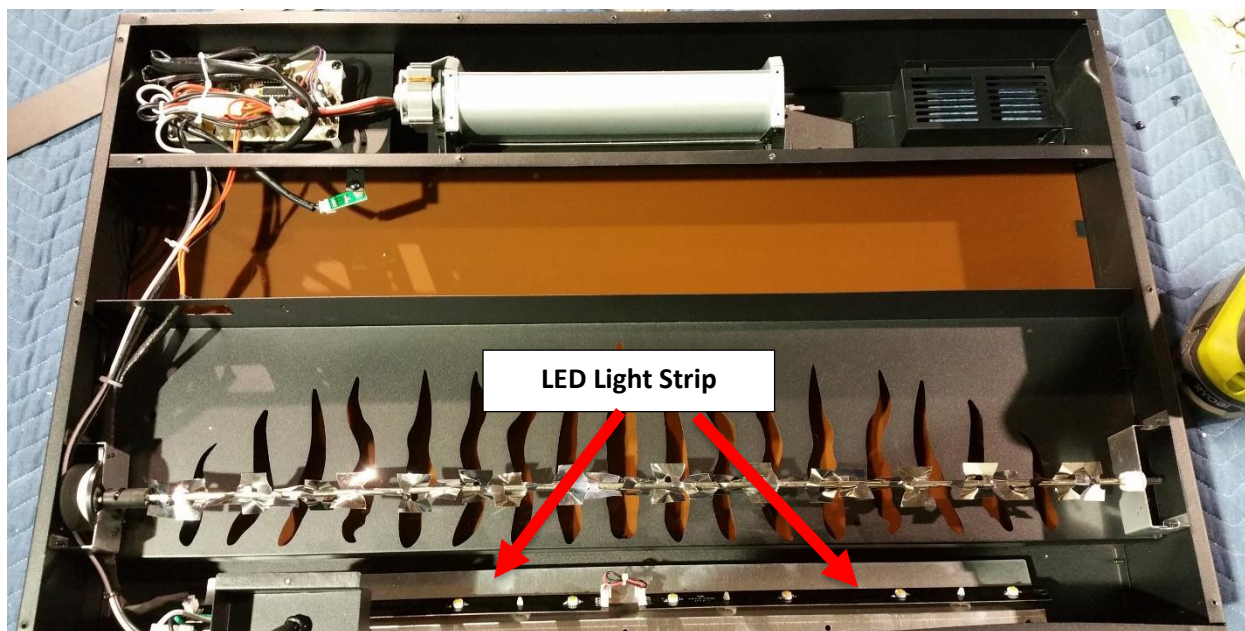
5. After removing the top panel, remove the 16 screws holding the back panel to the fireplace.



6. Remove the back panel from the fireplace.

\*\*Note: The back panel cannot be fully removed due to the heat disable switch, slide the back panel to the side so that you have access to the flame rod behind the panel.

7. Once the back panel is removed, you will have access the LED light strips as shown below.



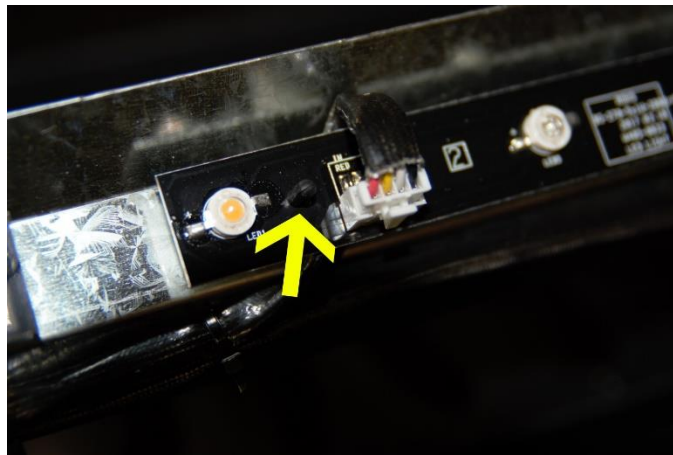
8. Unplug the power connection from the failing light strip.



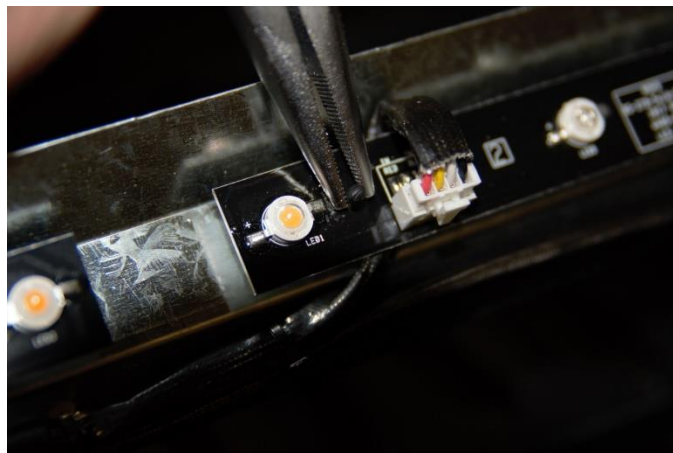
9. Once the light strip is unplugged, locate the 2 standoffs holding each light strip to the fireplace frame.



10. Using a pair of needle-nose pliers, pinch each standoff and lift the light strip UP to unhook the light strip from the standoffs.



**Light strip standoff**



**Pinch with needle-nose pliers and lift light strip UP to remove.**



11. Once the defective light strip is removed, install the new strip and test before closing the fireplace back up.

**\*\*If you have any questions, contact the technical support department at Touchstone Home Products at 800-215-1990 option 3.**