

---

## Assembling Your Whisper Lift II

### Adjusting Lift Mounting Supports

#### *Tools Needed:*

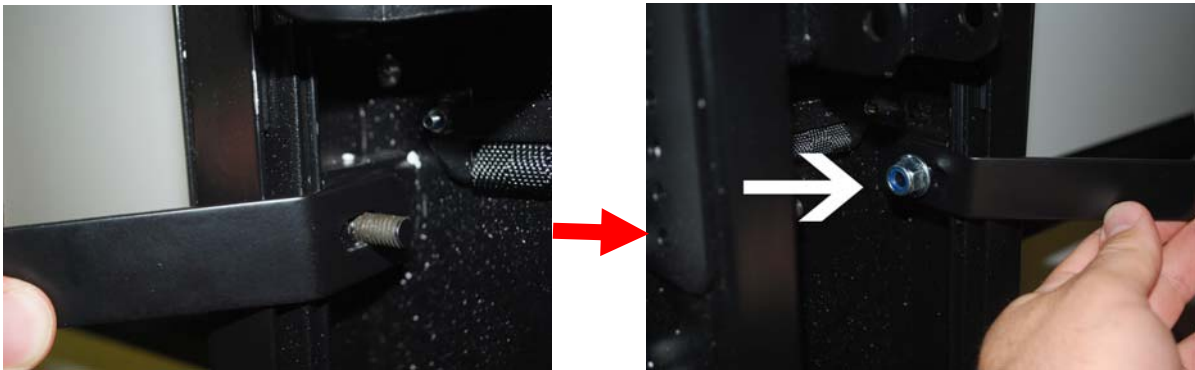
- adjustable wrench

#### *Instructions:*

The Whisper Lift II ships with 2 mounting brackets pre-installed on the back of the lift as shown in the picture below:



Typically, these brackets do not require any adjusting by the customer. Should you need to adjust these brackets to level the lift, loose the nuts holding the bracket to the lift and move the bracket accordingly.



Once adjusted, the lift is ready for installation.

---

## Installing Crossbrackets on TV Lift

### *Tools Needed:*

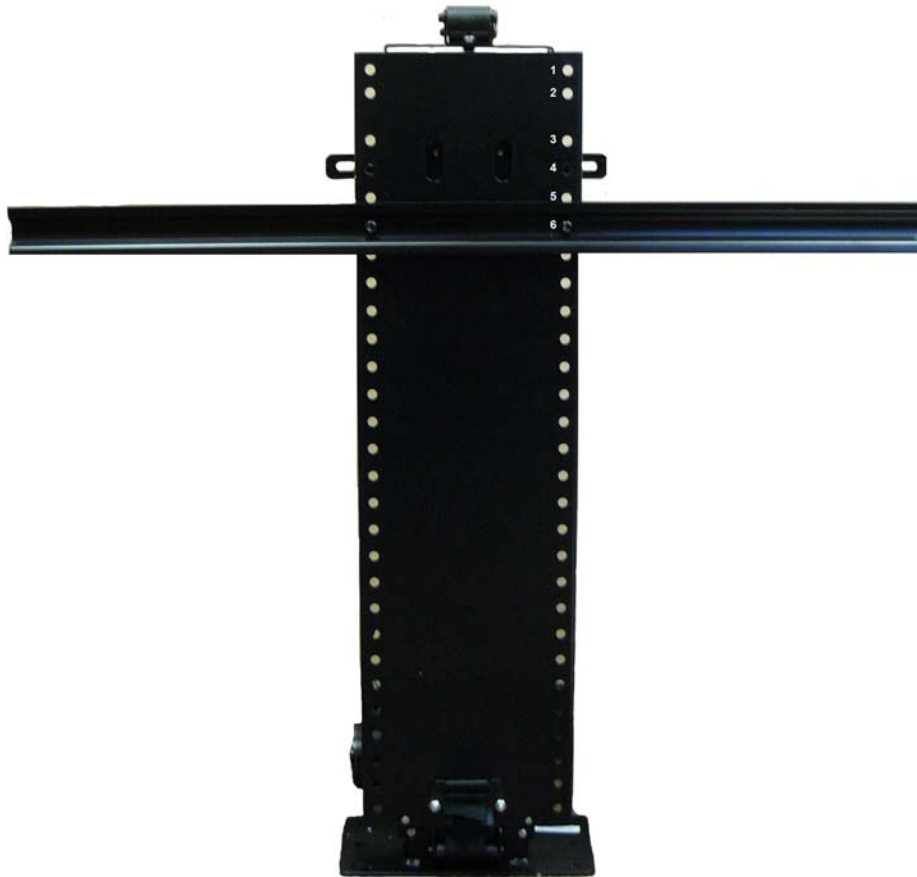
- adjustable wrench
- size 5 metric hex wrench

### *Parts Needed During This Step:*

- TV Lift
- 2 cross brackets
- 4 large hex screws- size 5
- 4 large lock nuts

### *Instructions:*

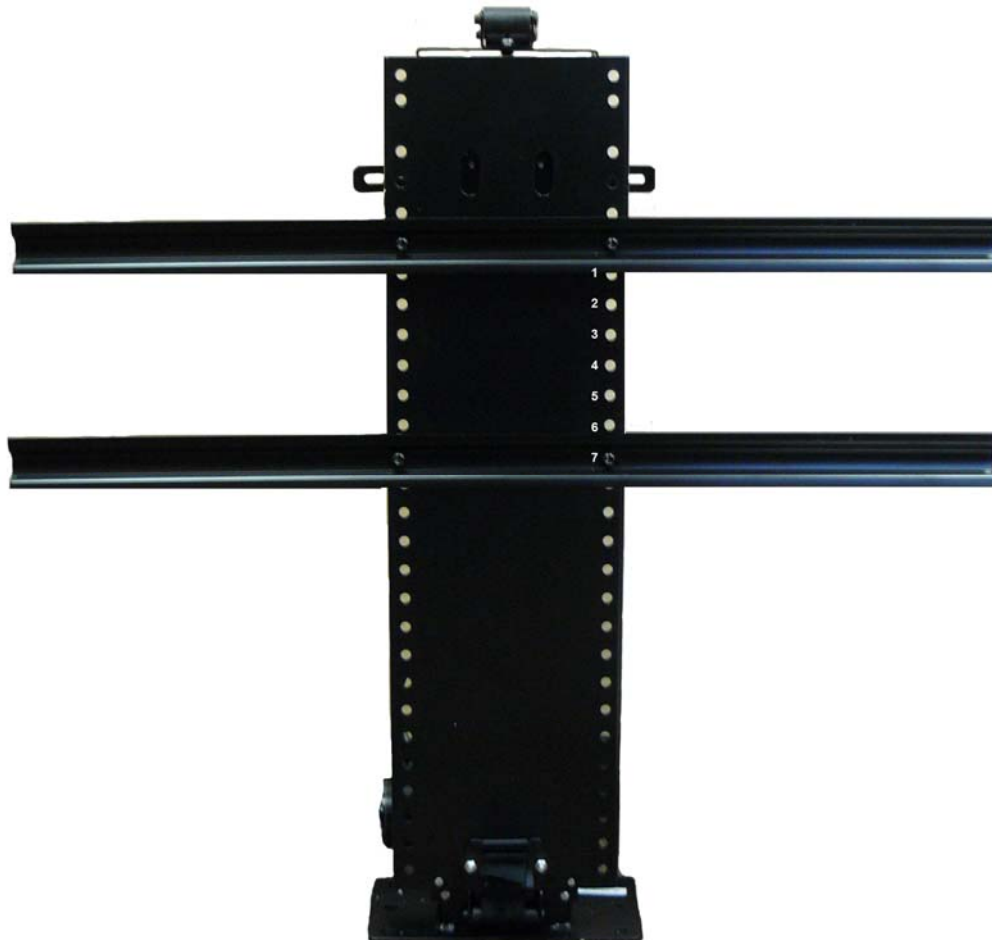
1. Gather the 2 long crossbrackets, 4 large hex screws, and 4 large lock nuts.
2. Mount the top crossbracket in the 6<sup>th</sup> set of holes from the top of the lift. Use 2 large hex screws and 2 lock nuts to secure the crossbracket to the lift.



---

## Installing Crossbrackets on TV Lift – cont

3. Mount the bottom crossbracket 7 holes down from the top crossbracket. Use the remaining 2 large hex screws and 2 lock nuts to secure the crossbracket to the lift.



\*\*NOTE: Make sure that the brackets are secured tightly to the lift prior to operation.

---

## Fasten Lift To Elevate Cabinet

### *Tools Needed:*

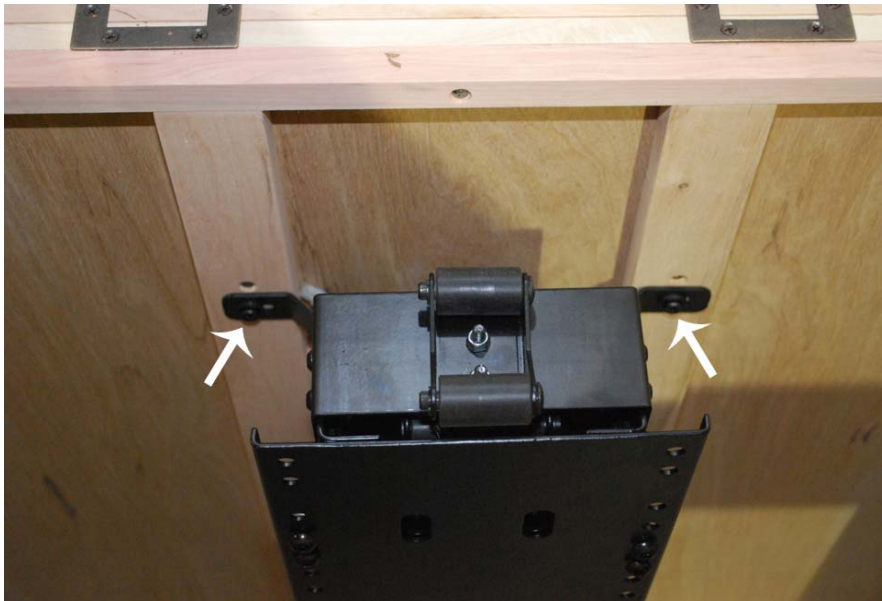
- Hex wrench (provided)
- level

### *Parts Needed During This Step:*

- 2 long hex bolts (provided)
- 6 hex bolts (provided)

### *Instructions:*

1. Remove front panel from cabinet. See page 20 for instructions on removing the front panel.
2. Open cabinet lid and place lift in cabinet through lid.
3. Align lift with mounting holes on the back of the cabinet.
4. Using the long hex bolts, mount the lift to the back of the cabinet.



---

**Fasten Lift To Elevate Cabinet - cont**

5. After mounting the lift to the back of the cabinet, push the lift toward the back wall of the cabinet. The holes in the bottom of the lift will match up with the 6 holes in the floor of the cabinet (fig A).



(fig A)

6. Using a level, make sure that the lift is level to the cabinet. If the lift is not level, adjust accordingly the 2 back brackets accordingly to adjust the lift. See p8 for more information on adjusting the rear brackets.



## Fasten Lift To Elevate Cabinet - cont

7. Install 6 bolts to fasten the lift to the floor of the cabinet. Fasten screws tightly to secure lift to floor of the cabinet.

