

## Installing Locking Brackets on Whisper Lift II TV Lift

### *Tools Needed:*

- Philips-head screwdriver

### *Instructions*

1. Locate the bag with the Locking Bracket Kit included with your lift. In this bag, there will be 2 brackets and 2 philips-head screws.



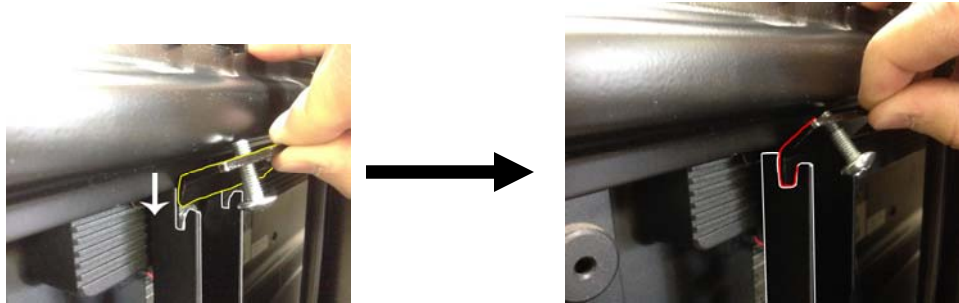
2. Install the screw in each bracket so that the end opposite of the head of the screw is just slightly through the bracket.



---

### Installing Locking Brackets on Whisper Lift II TV Lift – cont.

3. Place the angled end of the bracket into the slots in the TV mounting bracket just below the bottom cross bracket on the lift, as shown in the diagram below.



4. With a Philips-head screwdriver, tighten the screw so that the screw is tight against the cross bracket, as shown in the picture below.



5. After installing the first locking bracket, install the 2<sup>nd</sup> locking bracket on the other TV bracket in the same manner. Your TV should now be locked in place and not move from side to side.